

# Flextur™

*A more excellent way to work.*

RIGID Flexibility



**2025 Product Catalog**

[connect@Flextur.com](mailto:connect@Flextur.com) • [Flextur.com](http://Flextur.com) • 877-435-3988



# Welding Solutions

## Flextur Industrial Welding Table Solutions

The only Workstation/Welding Table to feature Gridlok Innovation. Flextur Weld Tables increase efficiency, productivity, and accuracy. They have proven to reduce material waste, man-hours, employee fatigue, and lead times. All while improving ergonomics and employee morale.

### Mobile Tables



**48" x 48" Welding Table  
& 57 Piece Fixture Kit**  
48"L x 48"W x 35"H. 4,000lbs Capacity  
MSRP \$6,495 71500005

**48" x 48" Welding Table Only**  
MSRP \$4,650 78909515

**57 Piece Kit Only**  
MSRP \$1,935 78908270



**48" x 96" Welding Table  
& 95 Piece Fixture Kit**  
48"L x 96"W x 35"H. 4,000lbs Capacity  
MSRP \$12,450 71500006

**48" x 96" Welding Table Only**  
MSRP \$7,900 78909525

**95 Piece Kit Only**  
MSRP \$4,995 78908280



**Mobile Welding Table &  
42 Piece Fixture & Accessory Kit**  
30"D x 48"W x 35"H. 1,750lbs Capacity  
MSRP \$3,770 71500009

**Mobile Welding Table Cart Only**  
MSRP \$2,935 78909100

**42 Piece Fixture & Tool Board  
Accessory Kit Only**  
MSRP \$948 78908250

### Stationary Tables



**36" x 30" Stationary Welding Table  
& 27 Piece Fixture Kit**  
36"L x 30"W x 35"H. 2,000lbs Capacity  
MSRP \$2,450 71500003

**36" x 30" Stationary Welding Table Only**  
MSRP \$1,700 78909250

**27 Piece Kit Only**  
MSRP \$820 78908260



**36" x 72" Stationary Welding Table  
& 27 Piece Fixture Kit**  
36"L x 72"W x 35"H. 2,000lbs Capacity  
MSRP \$3,950 71500004

**36" x 72" Stationary Welding Table Only**  
MSRP \$3,250 78909265

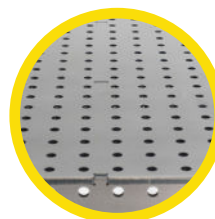
**27 Piece Kit Only**  
MSRP \$820 78908260



**48" x 48" Stationary Welding Table**  
48"L x 48"W x 35"H. 6,000lbs Capacity  
MSRP \$4,150 78909510



**48" x 96" Stationary Welding Table**  
48"L x 96"W x 35"H. 6,000lbs Capacity  
MSRP \$7,200 78909530



### Table Top Only

**48" x 48" x 6" 5-Sided Table Top Only**  
MSRP \$3,150 78909500

**48" x 96" x 6" 5-Sided Table Top Only**  
MSRP \$5,900 78909520



## Complete Welding Stations



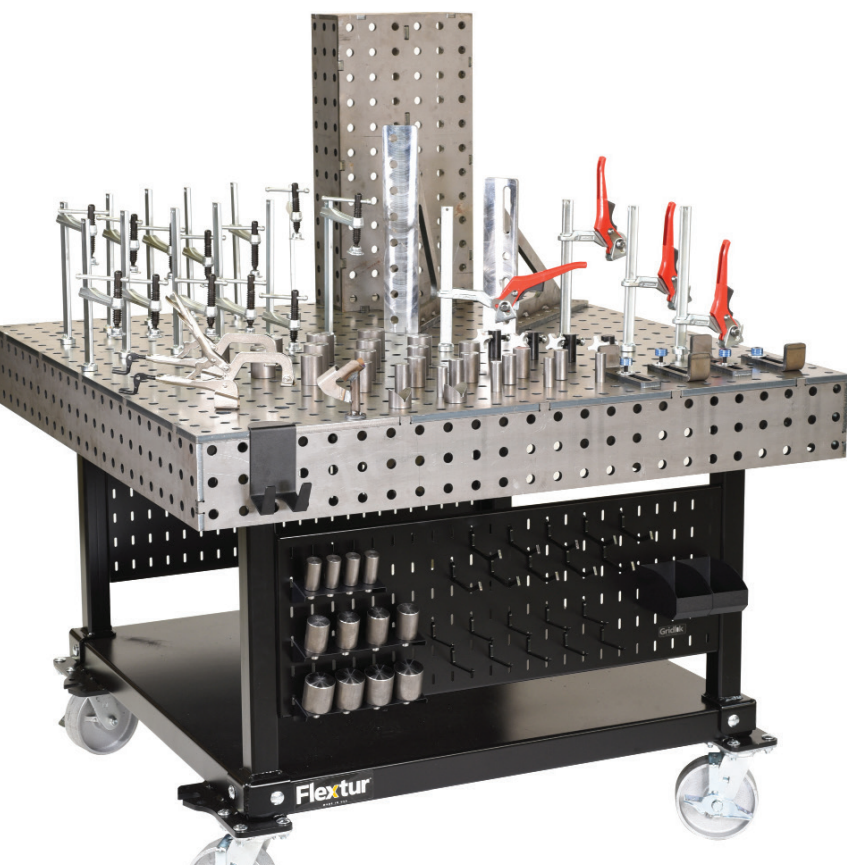
48" x 48" x 6" Welding Table with  
57 Piece Fixturing Kit, 2-Panel  
Mobile Tool Board & 41 Piece  
Accessory Kit

MSRP \$7,950 71500007



48" x 96" x 6" Welding Table with  
95 Piece Fixturing Kit, 2-Panel  
Mobile Tool Board & 41 Piece  
Accessory Kit

MSRP \$13,950 71500008



## New Welding Curtain



### Welding Curtain

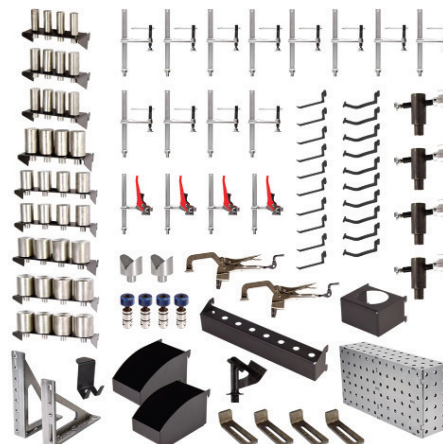
40"W x 23"H Designed for Weld Table Surface  
MSRP \$140 71500118

This curtain is designed for Pin & Clamp Tables with a 5/8" peg that drops into a weld tabletop. This curtain can then pivot or swing in and out of the way. It is also extremely easy to relocate by simply moving to a new hole or pin location.

- Lightweight, easy to position
- Works on any 5/8" hole welding table
- Patent Pending



## Weld Table Accessories



95 Piece Kit shown here

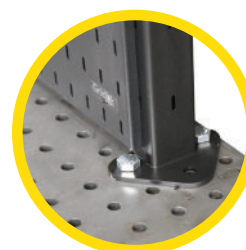
Weld Table Accessories are sold individually, in kits, or combos. Visit us online at [flextur.com](http://flextur.com) to see all our Welding Table Accessories.

**27 Piece Kit** MSRP \$820 78908260

**42 Piece Kit** MSRP \$948 78908250

**57 Piece Kit** MSRP \$1,935 78908270

**95 Piece Kit** MSRP \$4,995 78908280



### Welding Table Tool Board Kit

37"H x 34"W Bolts to Weld Table Surface  
MSRP \$448 78908305



Since 1978.

# Cobot Welding Systems

Create an extremely Accurate, Repeatable, Safe, Efficient Highly Productive, and Easy to Use Cobot Welding Cell.



The patent pending pneumatic clamping system accurately aligns and holds Fixture Plates in position every time.

**DO NOT OPERATE** without guards or fixture plates over clamps.



Quick-Change Fixture Plates ensure that your parts are positioned and clamped in the exact spot every time, ( $\pm 0.01"$ ) allowing you to create highly accurate, repeatable, automated workflows. Available in 72" x 36" and 36" x 36" sizes.



## Gridlok INNOVATION

The industry's strongest metal toolboard for integrated tool storage. (page 8)



Two hand push button operation of pneumatic clamping system for operator safety.

## Integrate your new or under utilized Cobots into Flextur's Welding System

to create an extremely accurate, efficient, safe, and highly productive, and easy to use welding cell. Using our patent pending Quick-Change Fixture Table and Quick-Change Fixture Plates to ensure that your parts are positioned and clamped in the exact spot every time, ( $\pm 0.01"$ ) allowing you to create highly accurate, repeatable, automated workflows.

## Switch to a different part in minutes.

Release the pneumatic quick-detach welding Fixture Plate and return it to the Quick-Change Fixture Plate storage solution (page 4) that fits your needs. Choose the next Quick-Change Fixture Plate and safely clamp it into position with the touch of a button. Select your new program and keep your workflow humming.



## Invest in a System that will grow with you as your cobot welding capabilities advance.

The Modular Design of the Flextur Cobot Welding System will meet you where you are and adapt with you into the future. Whether you are getting your first cobot, or you have several. If you just got your first welding table, or you've been using fixtures. Flextur's Cobot Welding System will grow with you as you become more advanced in your cobot usage.

## New Welding Curtain & Bracket



**Welding Curtain & Bracket**  
22"H x 40"W  
Designed for Quick-Change Table, complete with mounting bracket.

MSRP **Call For Price** 71500164



### Cobot Welding Pedestal

Designed to mount directly to any welding table, with or without a skirt.

MSRP **\$795** 71500111

- Save valuable table space
- Safely isolate your cobot
- Universal mounting
- Affordable alternative

### Mounting Plates

Fanuc

MSRP **\$195** 71500113

Universal Robot

MSRP **\$195** 71500114

ABB

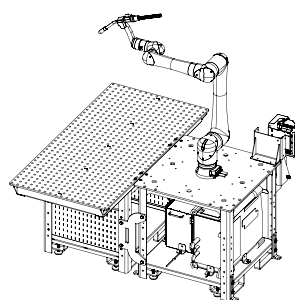
MSRP **\$195** 71500115

### Cobot Power Supply Cart

Designed to house the cobot CPU, welding power supply, a vertical or horizontal wire feeder and gas bottle.

MSRP **\$895** 71500116

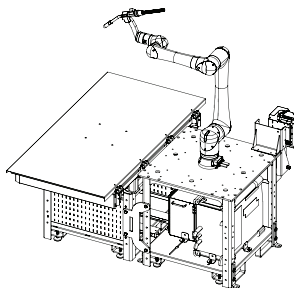
- Supports any power supply
- Mobile
- Accepts vertical or horizontal feeder
- Safe gas bottle storage



### 1-Sided Cobot Welding Table

72" x 36" Cobot Welding Table with Docking Station

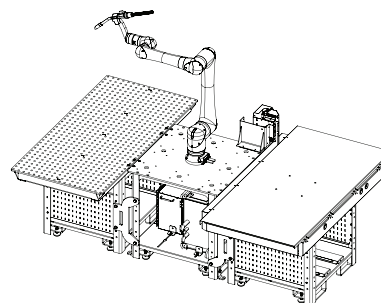
MSRP **\$12,550**



### 1-Sided Quick-Change Table

36" x 36" Quick-Change Table with Docking Station

MSRP **\$16,150**



### 2-Sided Welding & Quick-Change Tables

72" x 36" Cobot Welding Table

72" x 36" Quick-Change Table with Docking Station

MSRP **\$24,000**

## Rent any of our Cobot Welding Systems for a low monthly payment.

For Example: Rent a 3-Sided Quick-Change System (MSRP \$34,850) for just \$6,200 per month.

Rentals can include additional Flextur products to support your Cobot Welding Cell investment.



Since 1978.

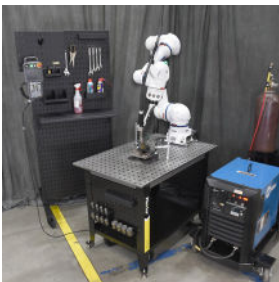
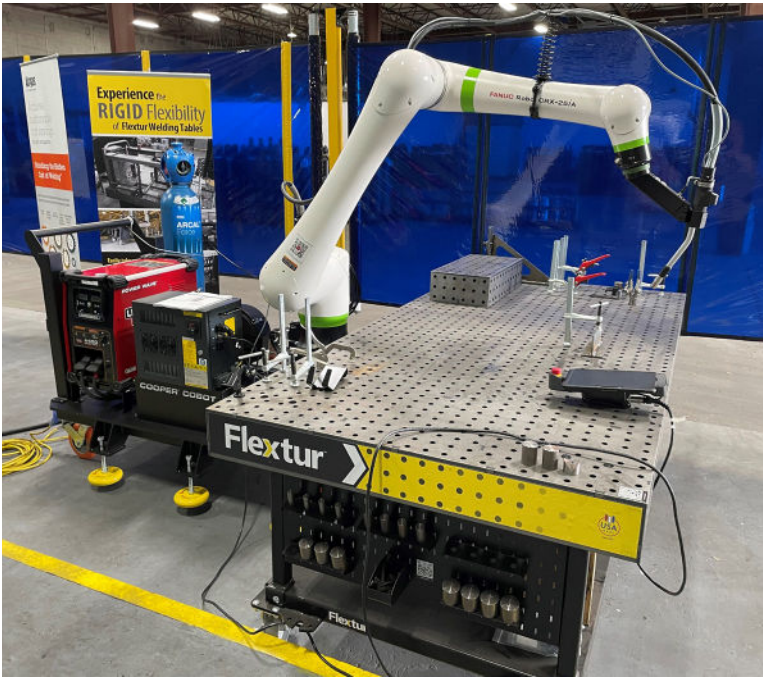
## Pricing is for Table Configuration and Wire Feeder Mount. Price Does Not Include Cobot or Power Supply. \*

Quick-Change Tables come with one blank Fixture Plate. \*Prices are subject to change.

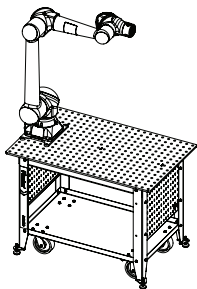
# Training Centers

## Training Center & Tech School Solutions.

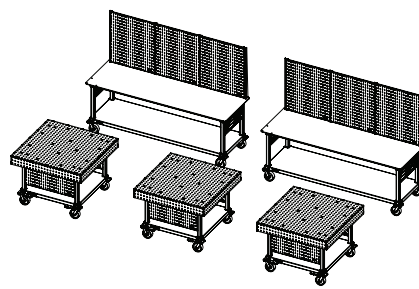
**Flextur offers completely mobile, extremely agile and efficient solutions for training facilities, tech schools, vocational classrooms, and R&D Departments.** Flextur's unique ability to organize and standardize not only sets it apart in the industrial space. It makes Flextur the ideal solution for training applications. Keep all the necessary tools and materials close by with onboard Tool Board panels and Flextur Mobile Toolboards. And at the end of the day, everything is mobile if you need to repurpose the room, or simply clean up. Educational Discounts available.



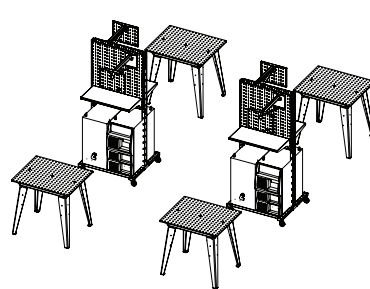
**Let Flextur help you with your next Training Facility or Classroom floor plan.**



Cobot Training Station on  
Flextur Mobile Welding Table Cart



Mobile Flextur Tables with  
Flextur Workbenches featuring Tool Board



Individual Flextur Stationary Tables  
with Shared Mobile Toolboard Workstations

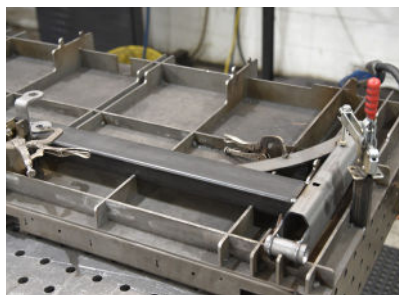


# Fixtures

## Affordable Fixture Solutions

### Interested in having Flextur create fixtures for your Cobot Welding System?

Flextur can assist anyone using a Flextur Cobot, or Robot Welding System by designing and/or building fixtures for their specific application. we have decades of experience in Contract manufacturing, utilizing automation and fixtures. Our teams expertise in SolidWorks and offline programming software from CENIT, we are able to efficiently and affordably create work cells and fixtures. Contact Flextur for more details about how we solve complex problems with simple solutions that work.



Pricing levels based on complexity and design time.  
Projects include design, fixture proofing, and Fixture Plate.  
Programming and program proofing are also available.



## Fixture Storage Solutions

### Fixture Storage Racks

Organize and protect your investment in fixtures while continuing to reduce setup times. Designed to store a large volume of fixtures near your Cobot and Flextur Quick-Change table. Access the fixtures you need with a central overhead lift and change over your Flextur Quick-Change table quickly and safely.

MSRP **\$195** 71500113

- Store fixtures vertically in overhead tracks
- Adjusts horizontally to maximize storage space
- Store 5, 400lbs. 36"x 72" Fixture Plates with 14" h fixtures
- Store 10, 200lbs. 36"x 36" Fixture Plates with 14" h fixtures
- Able to be stacked 2 high when bottom rack is anchored
- Requires overhead lifting device for fixture plates
- Built in fork pockets
- 56"h x 98.5"w x 72"d



### Fixture Storage Pallets

An economical solution for companies just starting out with Flextur Quick-Change Tables, or that don't require a large number of fixtures.

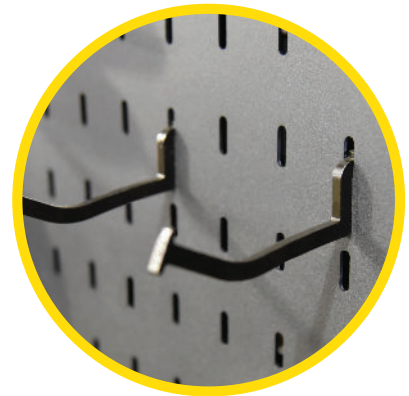


Since 1978.

# Tool Board & Material Handling Solutions

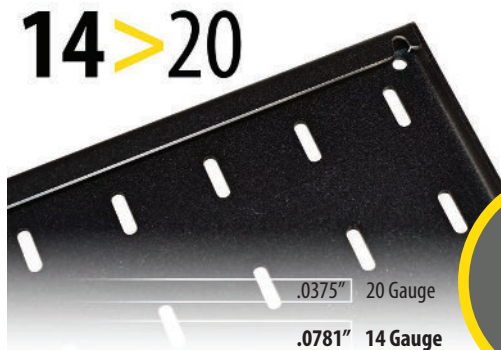
## Wall Mount & Mobile Tool Board

Flextur's patented design is the industries' strongest most versatile Tool Board System, capable of supporting 50lbs. on a single hook. Wall mount or mobile, Flextur is the ultimate tool control and storage system for work cells. Ideal for increasing productivity and implementing Lean and 5S Workflows. Flextur also has an extensive line of accessories that will help to overcome inefficiencies and increase productivity.



## Gridlok INNOVATION

A systematic approach to workspace efficiency is built into all Flextur products. One component of Gridlok Innovation is Flextur's patented hook and slot design used to create the industry's strongest metal tool board working environment.

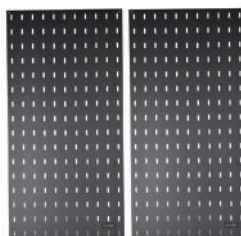


Flextur is nearly twice as heavy as the industry standard and easily supports 50lbs. on a single industrial hook, with select accessories that hold considerably more.

## Wall Mount



**Wall Mount System**  
8"H x 32"W. 400lbs Capacity  
**2 Panels & Hooks** MSRP \$289  
73584250



**Wall Mount System**  
32"H x 16"W. 400lbs Capacity  
**2 Panels & Hooks** MSRP \$338  
73584305

## Accessories



71 Piece Kit shown here

**Tool Board Accessory Kits**  
**26 Piece Kit** MSRP \$323 79208050  
**41 Piece Kit** MSRP \$748 79208060  
**71 Piece Kit** MSRP \$1,540 79208070

## 78" Mobile Workstations Single Part Number Combinations



**Mobile Tool Board**  
78"H x 32"W x 35"L. 900lbs Capacity  
**2 Panel** MSRP \$1,175  
79209560



**2 Panel Mobile Tool Board with 26 Piece Accessory Kit**  
Complete Work Station  
MSRP \$1,695  
71500001



**Mobile Tool Board**  
78"H x 32"W x 35"L. 900lbs Capacity  
**4 Panel** MSRP \$1,625  
79209570



**4 Panel Mobile Tool Board with 71 Piece Accessory Kit**  
Complete Work Station  
MSRP \$2,850  
71500002



## New 54" Mobile Workstations Single Part Number Combinations



**55 Event Cart**  
Complete Work Station  
MSRP **\$695** 71500145

Equipped for 55 identification and crashes. Store tags, tape, scraper - everything you need on a single mobile cart.

- 54" Mobile Tool Board Cart
- 10) 6" Standard Hooks
- 2) 3"x 5" Bins
- 2) 4"x 8" Bins
- 2) 7"x 10" Bins
- 1) 20"x 10" Bin
- 1) 20"x 16" Shelf
- 1) Screw Driver Rack
- 1) Pen Holder

55 Event Supplies Not Included



**PPE Supply Cart**  
Complete Work Station  
MSRP **\$675** 71500140

Equipped with multiple sizes of bins and specifically designed trays for the mobile organization and storage of PPE and first aid items.

- 54" Mobile Tool Board Cart
- 1) Safety Glass Holder
- 3) 10"x 12" Bins
- 3) Ear Plug Box Trays
- 1) Lens Cleaner Bracket
- 1) First Aid Kit Tray

PPE Supplies Not Included



**General Tool Cart**  
Complete Work Station  
MSRP **\$595** 71500126

Equipped with multiple sizes of hooks and bins to serve most mobile tool organization and storage needs. Ideal for maintenance departments and general use.

- 54" Mobile Tool Board Cart
- 2) 3"x 5" Bins
- 2) 4"x 8" Bins
- 10) 3" Standard Hooks
- 10) 4" Cradle Hooks
- 1) Screw Driver Rack
- 2) 2.75" Can Holders



**Storage Bin Cart**  
Complete Work Station  
MSRP **\$695** 71500125

Equipped with multiple sizes of bins for the mobile organization and storage you need.

- 54" Mobile Tool Board Cart
- 4) 3"x 5" Bins
- 4) 4"x 8" Bins
- 4) 7"x 10" Bins
- 4) 10"x 12" Bins

## New

### Mobile, Stackable & Forkable Material Handling Bins

Rugged steel bins for safely and securely transporting materials from departments within a plant, between plants, or as returnables from outside vendors. With a push for reusable pallet and material handling options, these bins will stand the test of time.

- Safely Transport Materials
- Rugged Design
- Optional Flip Down Door
- Stackable 2 High Fully Loaded



**Material Handling Bins**  
38"H x 42"W 1,000lbs Capacity  
MSRP **\$649** 71500132  
With Door MSRP **\$899** 71500133

42"H x 42"W 3,000lbs Capacity  
MSRP **\$789** 71500129  
With Door MSRP **\$999** 71500130

42"H x 42"W Bin Cart Dolly 6,000lbs Capacity  
MSRP **Call For Price**

### Flextur Also Manufactures Custom Material Handling Bins

Custom returnable steel shipping racks and bins offer durable, reusable solutions for securely transporting and storing products, significantly reducing waste and costs.



Since 1978.

Learn more about what USA Made represents at [Flextur.com](http://Flextur.com)

# Work Cell Systems

## Workbenches

### Flextur Industrial Workbench Systems

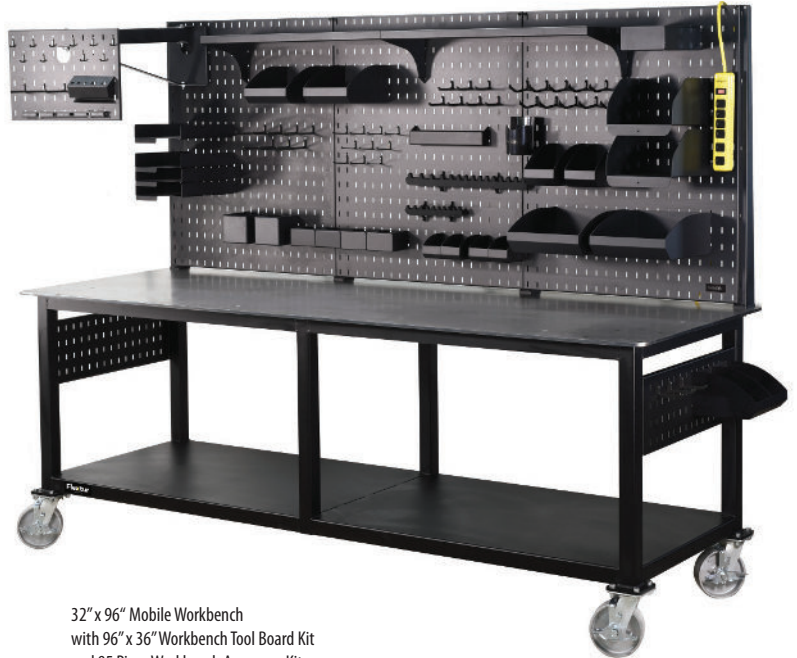
The Industries' only Workstation/Workbench to feature Gridlok Innovation, creating the Industries' Strongest Most Versatile Tool Board System. Flextur Workbenches increase efficiency, productivity, and organization. Reduce wasted time, improve ergonomics, and employee morale.



Workbenches and Packing Tables feature Flextur Tool Board on both ends



Workbenches and Packing Tables accept all Flextur Accessories sold individually or in kits.



32" x 96" Mobile Workbench with 96" x 36" Workbench Tool Board Kit and 85 Piece Workbench Accessory Kit

## Mobile



**48" x 32" Workbench**  
32"D x 48"W x 35"H. 1,500lbs Capacity  
MSRP \$2,450 79059610



**96" x 32" Workbench**  
32"D x 96"W x 35"H. 2,000lbs Capacity  
MSRP \$3,750 79059630

## Stationary



**28" x 48" Workbench/Pack Table**  
28"D x 48"W x 35"H. 750lbs Capacity  
MSRP \$638 79059600



**28" x 72" Workbench/Pack Table**  
28"D x 72"W x 35"H. 1,000lbs Capacity  
MSRP \$898 79059620

## Tool Board Kits for Workbenches



**48" x 36" Tool Board Kit**  
MSRP \$490 79058325



**96" x 36" Tool Board Kit**  
MSRP \$1,060 79058335



**48" x 16" Tool Board Kit**  
MSRP \$375 79058260



**72" x 16" Tool Board Kit**  
MSRP \$475 79058275

## Workbench Accessory Kits

Flextur Accessories are sold individually or in kits.

**28 Piece Kit** MSRP \$289 79058100

**58 Piece Kit** MSRP \$875 79058110

**85 Piece Kit** MSRP \$1,489 79058120

Have a project we can help you with?

connect@Flextur.com • Flextur.com • 877-435-3988



## Utility & Tear Down Carts

Ideal for shipping, receiving, material transport, maintenance, and automotive applications. An optional stainless steel liner is available for the Tear Down cart. This cart features a draining top shelf and second self to store a catch pan (included).



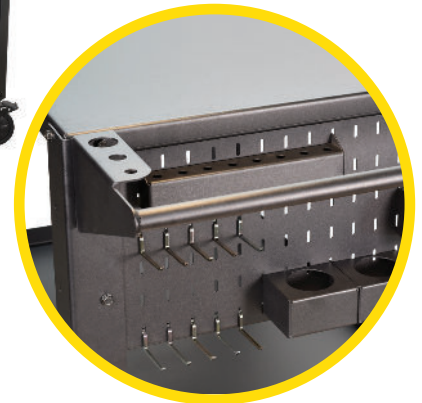
**Utility Cart**  
30"W x 48"L x 35"H. 1,000lbs Capacity  
MSRP \$1,348 79089525



**Stainless Steel Liner**  
30"W x 48"L x 1.75"H.  
MSRP \$594 77908660



**Tear Down Cart**  
30"W x 48"L x 35"H. 1,000lbs Capacity  
MSRP \$1,775 77906330



Flextur Tool Board panel on Handle End  
Accepts Flextur Accessories

## Packing Station

### Flextur Packing Station Systems

Versatile Packing Stations for efficiency and organization featuring Gridlok Innovation and Flextur Accessories, the most versatile work station system for efficiently managing tools and supplies.

### Packing Station Accessory Kits



Packing Stations accept all Flextur  
Accessories sold individually or in kits.



**Packing Station Accessory Kits**  
**15 Piece Kit** MSRP \$158 76458100  
**23 Piece Kit** MSRP \$624 76458110



**Packing Station**  
30"D x 72"W x 84.5"H. 1,000lbs Capacity  
MSRP \$2,275 76452000



**Lock Box**  
14"L x 10"W x 7.5"H.  
MSRP \$328  
73528770



**Label Dispenser**  
12"D x 15"W x 7"H.  
MSRP \$348 73528570



Since 1978.

# What Our Customers Are Saying...



**"The Yaskawa team chose to work with the Flextur team, as they are very agile and responsive, with great engineering recommendations for welding applications with the Yaskawa Motoman Robotics. Both the Yaskawa and Flextur teams have worked well together."**

Josh Leath, Yaskawa American, Inc., Motoman Robotics Division,  
Senior Product Manager, Welding



**"We knew Flextur as a weld table manufacturer, and we saw potential to enhance our products with some of their products for workflow and LEAN manufacturing. They are on their game, and have been able to deliver what they said when they said."**

Todd Edge, Product Manager - BotX



**"We have been able to automate quite a variety of products in a cost effective manner through the quick change system on the tables. Fixtures can easily be moved from station to station with a high degree of confidence that locations are repeatable."**

Benjamin Vieth, Manufacturing Engineer - Modine



**"We've probably made over a million dollars worth of products on this table, and have only scratched the surface, literally. Don't think about it. Just get one."**

Chris Foster, Owner - Foster Welding



**"Excellent Versatility, with the 2" grid pattern they are able to accurately meet every dimensional requirements of our weldments. We've been able to hold tolerances not only on flat work but vertical weldments as well by utilizing fixture blocks. We're Very Happy... Very Happy with our Flextur Tables."**

John Jesse, Quality Control Manager - Southwest Welding



**"Mobility is Key. We are tight on space and being able to roll our tools in and out based on what we are doing is a game changer, even cleaning up is easier."**

Conrad Schrock, Rockwood

**Flextur**  
A more excellent way to work.

Flextur • 16875 Jericho Road • Dalton, Ohio 44618  
**connect@Flextur.com • Flextur.com • 877-435-3988**



Since 1978.

US PATENT 505812999 • 011525 • 98000001 • COPYRIGHT FLEXTUR 2025