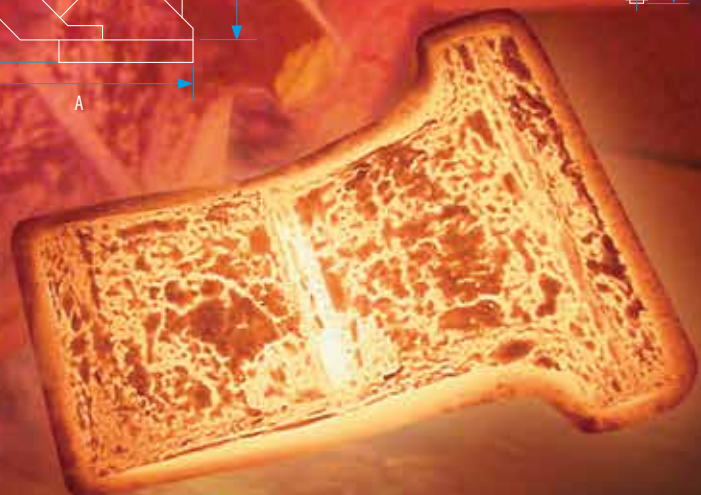
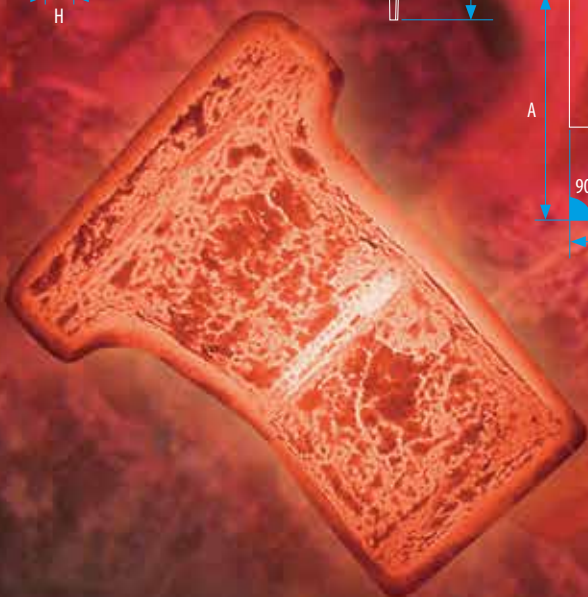
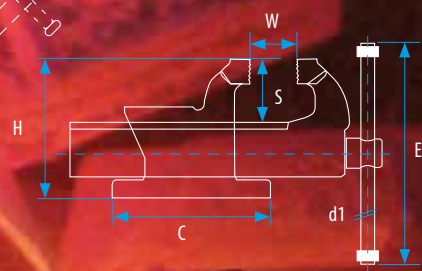
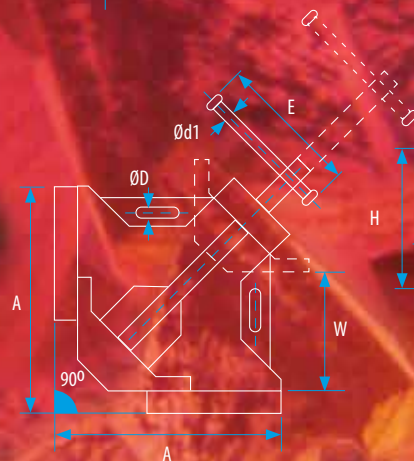
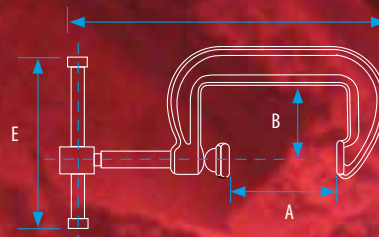
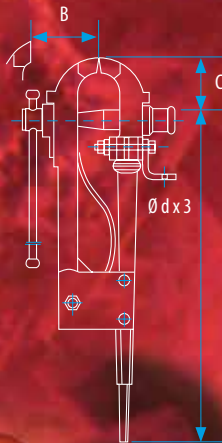
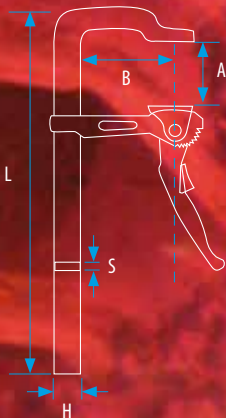
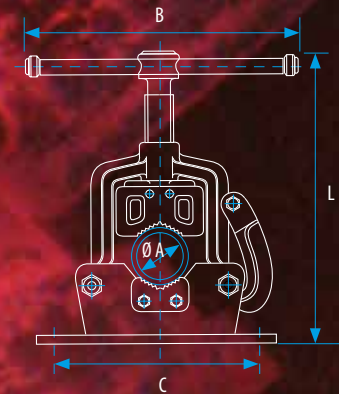
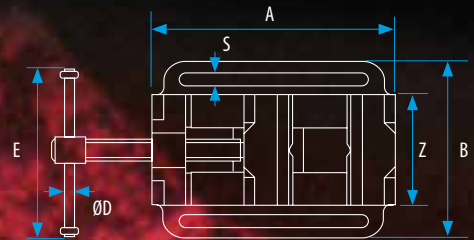
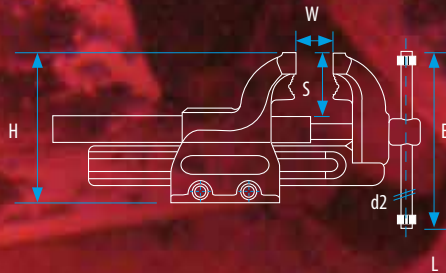
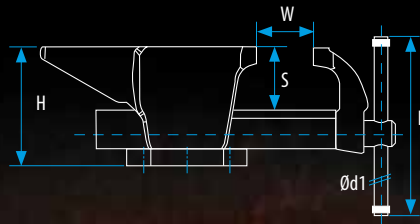
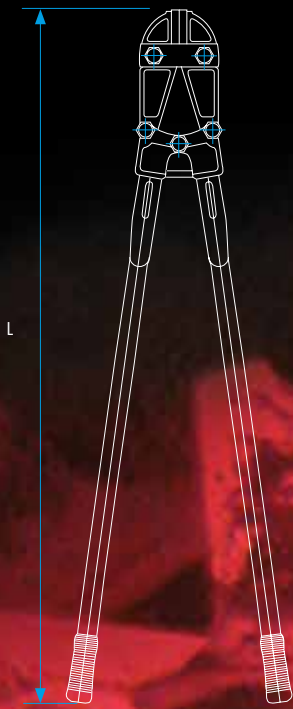


# KANCA

DESIGN • FORGE • SAFETY

## HAND TOOLS CATALOGUE



[www.kancaforging.com](http://www.kancaforging.com)







## HISTORY

KANCA began its production of hand tools in the early 1960s as a family owned company with a workforce of 20. A short time later, as the quality of the products was well accepted by the market, the range expanded to cover a very extensive spectrum of hand tools.

A new plant of 15.000 m<sup>2</sup> was constructed and began operation in 1974 where the expanded and modernized forging line made it also possible to supply high quality forged parts to the industry. Since the beginning of the 1980s the demand from the automotive industry has lead the way to further increase the capacity in the forged parts production and supply higher quality parts to local OEMs as Fiat, Mercedes, Iveco, Ford and Renault.

During the 1990s, KANCA has become a reliable partner and indispensable source of supply to dozens of customers in the passenger, commercial and agricultural vehicles, defense, and construction industries. Nowadays, even customers like VW and the ZF group have come to rely upon the renowned quality of KANCA. Having all the necessary facilities such as part and tool design, production, forging, heat treatment and machining under the same roof has proven KANCA to be a single point of supply.

On top of a **capacity of 30.000 tons/year or appx. 20.000.000 parts/year** drop forging and machining, a new production line of cold forming has started in 1997. For both automotive and hand tools parts, we can now offer an even wider range of products.

KANCA began its production of hand tools in the In 2004, **finishing the construction of a brand new 55,000 m<sup>2</sup> forging plant of that 33.000 m<sup>2</sup> closed**, Kanca moved to a new location, where it is now ready to supply additional capacity including presses and further possibilities.

Being the only forging company that has succeeded such a big investment in the region in the past years, Kanca shows its intention of long term reliability to its customers demanding forgings.

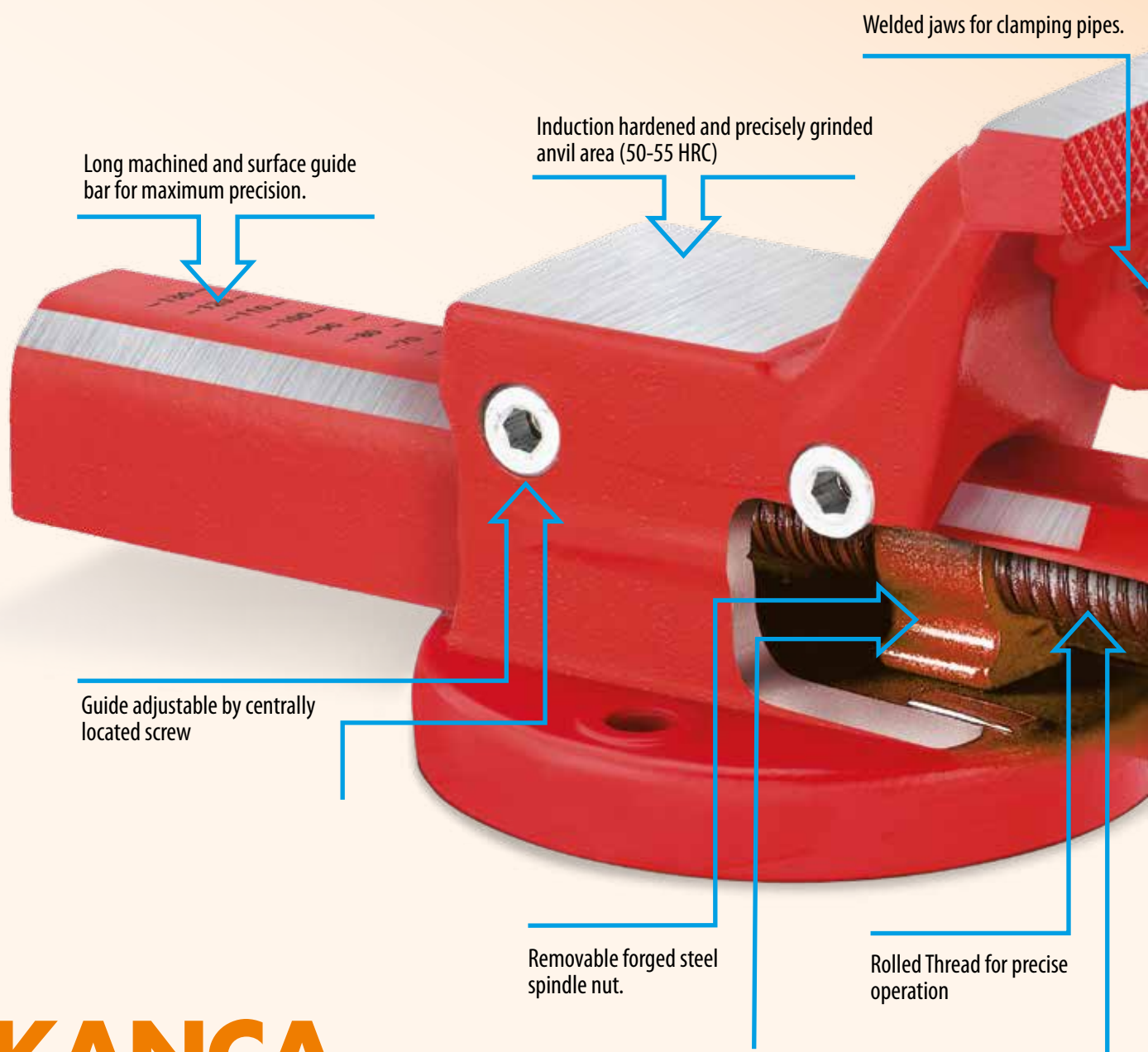
Through modern Q-A techniques and the certifications according to **DIN EN ISO 9001:2015, ISO 14001:2015 and IATF 16949** Kanca ensures improved service and increased attention to the customers exact requirements. Over 50% of the forging parts are now exported, predominantly to EU countries.

**KANCA**  
DESIGN • FORGE • SAFETY



# PRIMO FIX

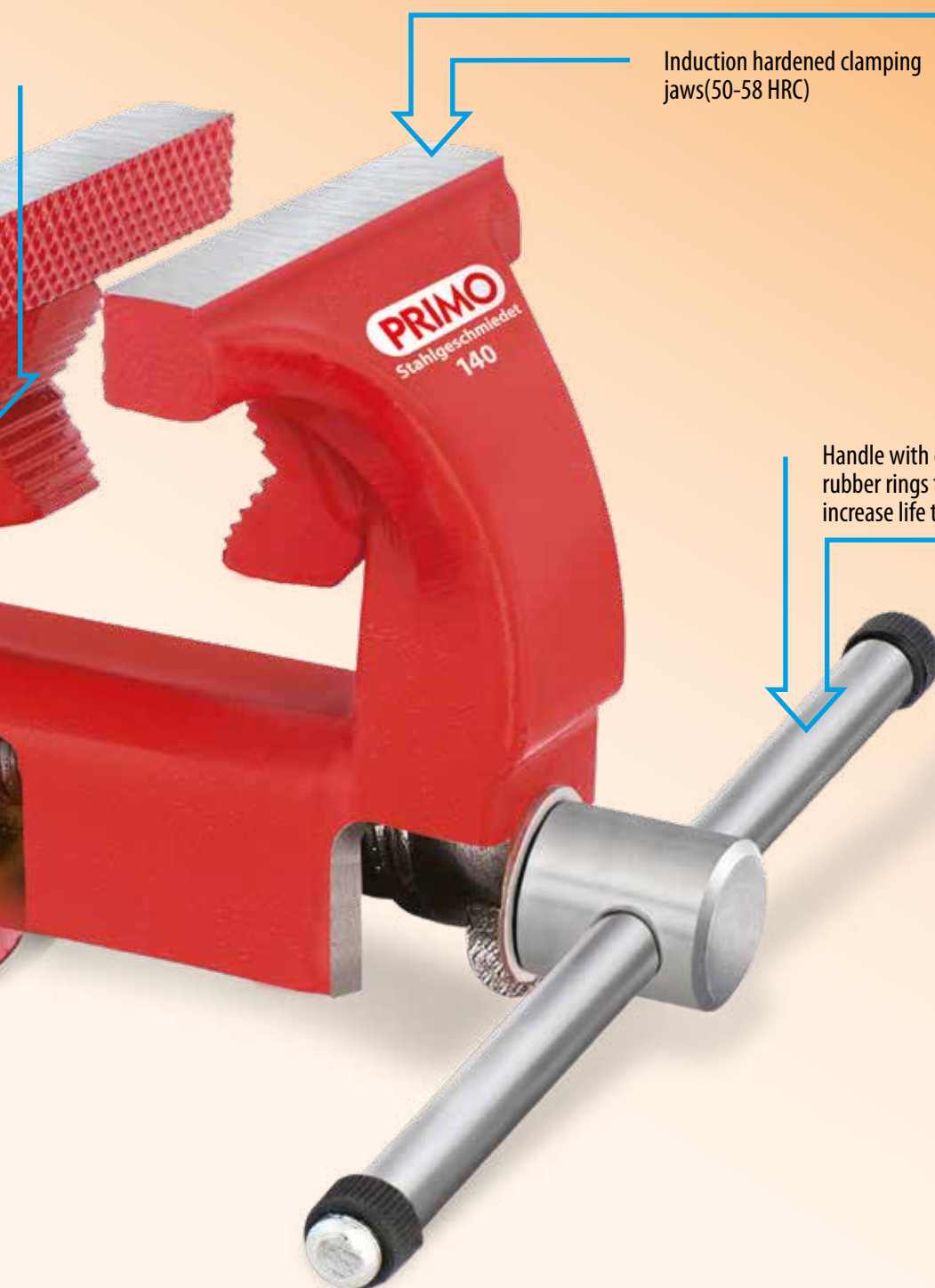
All drop-forged from steel



**KANCA**  
DESIGN • FORGE • SAFETY







Induction hardened clamping  
jaws(50-58 HRC)

Handle with changeable anti-pinch  
rubber rings to avoid accidents,  
increase life time and reduce noise.



**60 YEARS OF EXPERIENCE IN PRODUCTION,**



<b>PRIMO</b> VISE / Swivel Base  6	<b>PRIMO FIX</b> VISE / Swivel Base  7	<b>FORTISSIMO</b> VISE / Swivel Base  8	<b>FORTISSIMO FIX</b> VISE / Swivel Base  9
<b>kadett</b> VISE / Swivel Base  10	<b>kadett FIX</b> VISE / Swivel Base  11	<b>kanex</b> VISE / Swivel Base  12	<b>K2</b> VISE / Swivel Base  13
<b>CASTILLO</b> VISE / Swivel Base  14	<b>CASTILLO</b> FINEMECHANIC'S VISE  15	<b>VARIANT ELEVATOR</b> VARIANT ELEVATOR  16	CLAMPING SCREW  16
<b>LIFT/MOBIL</b> LIFTING and FOLD-AWAY DEVICE  17	<b>DRILLO</b> SWIVEL DRILL VISE  18	DRILL PRESS VISE  19	QUICK DRILL VISE  19
RIGHT ANGLE CLAMP  20	<b>anvillo</b> ANVIL & VISE  21	DROP-FORGED ANVIL  22	<b>UNICUS</b> DROP-FORGED ANVIL  22

SHANK VISE



23

FOLD-OUT PIPE VISE  
PORTABLE WORKSTAND



24

BOLT CUTTER



25

METAL SHEARS



26

CARPENTER'S SLIDING  
CLAMP



28

CARPENTER'S SLIDING  
CLAMP LIGHT



28

MEDIUM DUTY CLAMP /  
FORGED



28

LIGHT CLAMP/ FORGED



29

HEAVY DUTY CLAMP/  
FORGED



29

HEAVY DUTY CLAMP/  
FORGED



Copper-plated

29

QUICK CLAMP  
FORGED



30

FORGED C-CLAMP



30

FORGED C-CLAMP



Copper-plated

30

C-CLAMP  
(CAST)



30

MACHINIST  
HAMMERS



31

# PRIMO

## BENCH - VISE



### BENCH - VISE

All-steel, drop forged (CF45 Steel). With **extra large anvil and higher jaws for an increased clamping volume**.

Jaws and anvil induction hardened (HRC 50-58).

Rolled twin start Acme thread for precise operation.

Adjustable jaw alignment system guarantees precision clamping.

All vices are equipped with fixtures for removable snap-on pipe jaws for various applications. **LONG TIME GUARANTEE**

- With large anvil,  
With smooth jaw width,  
With increased clamping volume,  
Measuring scale

### Removable Jaws



**Removable snap-on pipe:**  
Drop forged and hardened (HRC 48-50), 3 point clamping over the full jaw width.



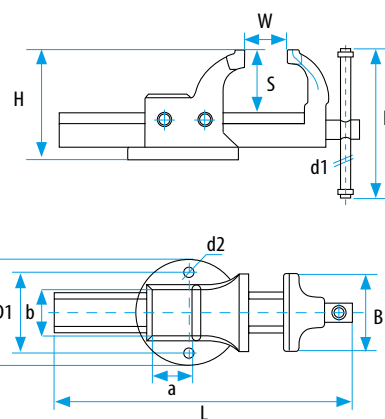
Part #	Size (inch)	lbs	
PRMJ-120	4.5"	1.1"	1
PRMJ-140	5.5"	1.2"	1
PRMJ-160	6"	2.2"	1
PRMJ-180	7"	2.2"	1



**Plastic Jaw Cap:**  
For protective clamping delicate workpieces. 2 pieces are necessary.



Part #	Size (inch)	lbs	
PRMJ-120	4.5"	.4"	1
PRMJ-140	5.5"	.4"	1
PRMJ-160	6"	.6"	1
PRMJ-180	7"	.6"	1





# PRIMO FIX

## PIPE and BENCH VISE



### PIPE and BENCH VISE

Bench vise with 2 welded jaws for clamping pipes guarantees precision parallel clamping. Available with jaw widths from 100 inch to 180 inch. (Other technical details like Bench-Vise).

### PRIMO BENCH - VISE

Part #		PRMWSB-100	PRMWSB-120	PRMWSB-140	PRMWSB-160	PRMWSB-180
Size		4"	4.8"	5.6"	6.4"	7.2"
Jaw Width	B (inch)	4"	4.8"	5.6"	6.4"	7.2"
Jaw Opening	W (inch)	5"	6"	8.0"	9.0"	9.0"
Length	L (inch)	13.1"	15.3"	18.8"	22.3"	22.3"
Anvil Size	axb (inch)	2.5 x 2"	2.8 x 2.7"	3.5 x 3"	4.5 x 4"	4.5 x 4"
Base Diameter	C (inch)	4.5"	6"	7"	7"	7"
Hole Distance	D1 (inch)	3.5"	4"	5.5"	6.5"	6.5"
Hole Diameter	d2 (inch)	.45"	.5"	.6"	.7"	.7"
Screwhandle	d1 (inch)	.5"	.5"	.6"	.7"	.7"
Screwhandle Length	E (inch)	7.5"	9"	12.2"	13.2"	13.2"
Jaw Depth	S (inch)	2.7"	3.3"	3.8"	4.6"	4.6"
Vise Height	H (inch)	4.8"	6"	7"	8"	8"
Weight	lbs	13.7	23.8	41	59	59
Clamps pipes from/to *1	(inch)		1/4 - 4"	1/4 - 5"	1/4 - 6"	1/4 - 6"

\*1) If pipe jaws required surcharge



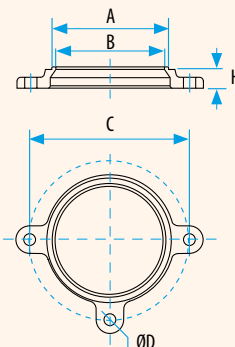
- The anvil area of the Primo vises is larger than that of the Fortissimo vises. In addition, the tube clamping volume between the jaws is larger.

### PRIMO FIX PIPE and BENCH VISE

Part #		PRMPLSB-100	PRMPLSB-120	PRMPLSB-140	PRMPLSB-160	PRMPLSB-180
min. Clamping Range	(inch)	3/8"	3/8"	3/8"	3/8"	3/8"
max. Clamping Range	(inch)	1 1/4"	1 1/2"	2 1/2"	3"	3"

### Swivel Base

- Drop forged, infinitely variable rotation between 0° and 360°. Position lockable by special bolt-screw arm.



Metal



Plastic

Metal Part #	Size (inch)	A	B	C	H	D Ø	lbs	Plastic Part #
PRMSR-100	4"	4.2"	4"	6"	.7"	.45"	1.7	PRMSP-100
PRMSR-120	4.8"	5.3"	5.1"	7"	.9"	.55"	2.8	PRMSP-120
PRMSR-140	5.6"	6.6"	6.3"	8.7"	.8"	.55"	4.1	PRMSP-140
PRMSR-160	6.4"	7.2"	6.3"	10"	1.1"	.7"	4.3	PRMSP-160
PRMSR-180	7.2"	7.2"	6.3"	10"	1.1"	.7"	4.3	PRMSP-180

# FORTISSIMO

## BENCH - VISE



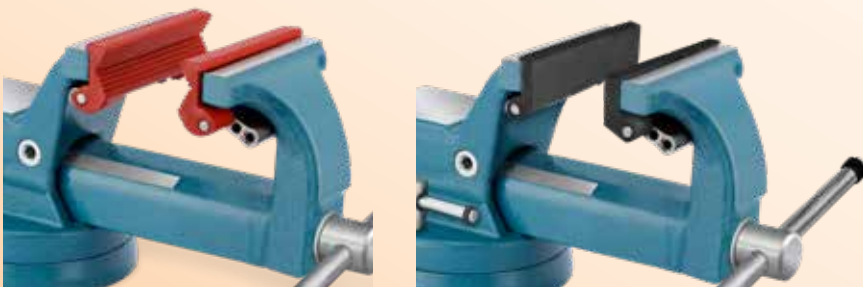
### BENCH - VISE

All-steel, drop forged (CF45 Steel). Jaws and anvil induction hardened (HRC 50-58).

Adjustable jaw alignment system guarantees precision clamping.

All vices are equipped with fixtures for removable snap-on pipe jaws for various applications. **LONG TIME GUARANTEE**

### Removable Jaws



#### Removable snap-on pipe:

Drop forged and hardened (HRC 48-50), 3 point clamping over the full jaw width.



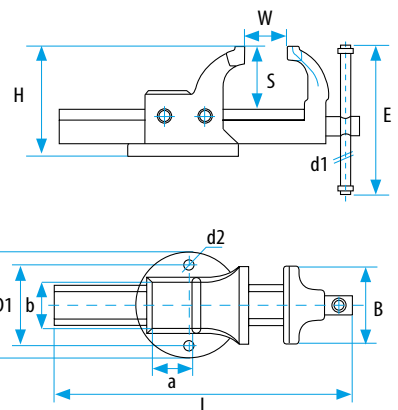
Part #	Size (inch)	lbs	
FRTJ-115	4.5"	1.1"	1
FRTJ-125	5"	1.1"	1
FRTJ-135	5.5"	1.2"	1
FRTJ-150	6"	2.2"	1
FRTJ-175	7"	2.2"	1



#### Plastic Jaw Cap:

For protective clamping delicate workpieces. 2 pieces are necessary.

Part #	Size (inch)	lbs	
FRTJP-115	4.5"	.4"	1
FRTJP-125	5"	.4"	1
FRTJP-135	5.5"	.5"	1
FRTJP-150	6"	.6"	1
FRTJP-175	7"	.6"	1





# FORTISSIMO FIX

## PIPE and BENCH VISE



### PIPE and BENCH VISE

Pipe and Bench Vise with 2 welded jaws for clamping pipes guarantees precision parallel clamping.

Available with jaw widths from 4 inch to 8 inch. (Other technical details like Bench-Vise).

### FORTISSIMO BENCH - VISE

Part #		FRTWSB-100	FRTWSB-115	FRTWSB-125	FRTWSB-135	FRTWSB-150	FRTWSB-175	FRTWSB-200
Size		4"	4.5"	5"	5.5"	6"	7"	8"
Jaw Width	B (inch)	4"	4.5"	5"	5.5"	6"	7"	8"
Jaw Opening	W (inch)	5"	5.5"	6.3"	6.7"	7.5"	8"	8"
Length	L (inch)	12"	14"	15"	16.5"	18.5"	20"	20"
Anvil Size	axb (inch)	1 x 2"	1.5 x 2"	1.5 x 2.5"	2 x 2.5"	2.5 x 3"	2.5 x 3.5"	2.5 x 3.5"
Base Diameter	C (inch)	4.5"	5"	6"	6"	7"	8"	8"
Hole Distance	D1 (inch)	3.5"	4"	4"	4.5"	5"	6.5"	6.5"
Hole Diameter	d2 (inch)	.45"	.5"	.5"	.6"	.64"	.65"	.65"
Screwhandle	d1 (inch)	.5"	.5"	.6"	.6"	.6"	.7"	.7"
Screwhandle Length	E (inch)	7.5"	9"	10.6"	10.6"	12.2"	13.2"	13.2"
Jaw Depth	S (inch)	2.6"	2.9"	2.9"	3.5"	3.8"	4.3"	4.3"
Vice Height	H (inch)	4.7"	5.6"	5.6"	6.6"	7.4"	8"	8"
Weight	lbs	13.1	19.2	23.3	33.8	45.1	60.7	62.7
Clamps pipes from/to *1	(inch)	-	1/4 - 3"	1/4 - 3"	1/4 - 4"	1/4 - 5"	1/4 - 6"	1/4 - 6"

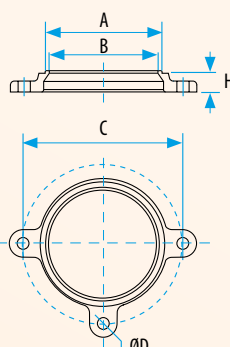
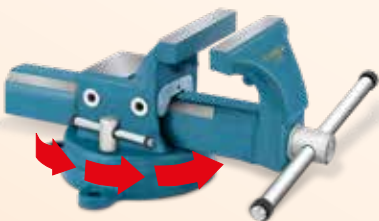
\*1 ) B If pipe jaws required surcharge

### FORTISSIMO FIX PIPE and BENCH VISE

Part #		FRTPLSB-100	FRTPLSB-115	FRTPLSB-125	FRTPLSB-135	FRTPLSB-150	FRTPLSB-175	FRTPLSB-200
min. Clamping Range	(inch)	3/8	3/8	3/8	3/8	3/8	3/8	3/8
max. Clamping Range	(inch)	1 1/4	1 1/2	1 1/2	1 1/2	2 1/2	3	3

### Swivel Base

- Drop forged, infinitely variable rotation between 0° and 360°. Position lockable by special bolt- screw arm.



Metal



Plastic

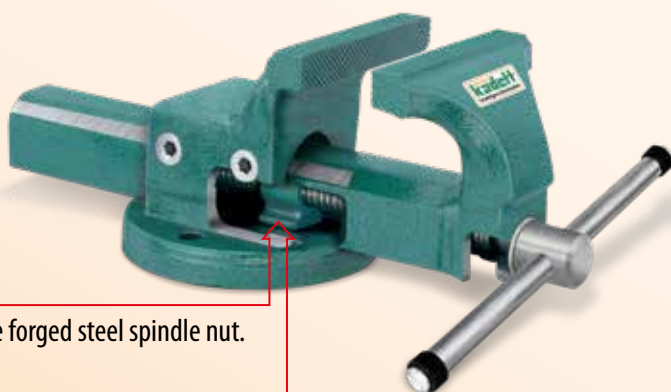
Metal Part #	Size (inch)	A	B	C	H	D Ø	lbs	Plastic Part #
FRTS-100	4"	4"	4"	6"	.7"	.45"	1.7	FRTSP-100
FRTS-115	4.5"	4.5"	4.5"	6"	.8"	.5"	2.2	FRTSP-115
FRTS-125	5"	5"	5"	7"	.9"	.5"	2.8	FRTSP-125
FRTS-135	5.5"	5.5"	5.5"	7.5"	.95"	.6"	3	FRTSP-135
FRTS-150	6"	6"	6"	8.5"	1"	.6"	4.4	FRTSP-150
FRTS-175	7"	7"	7"	9.5"	1.1"	.65"	5.7	FRTSP-175
FRTS-200	8"	7"	7"	9.5"	1.1"	.65"	5.7	FRTSP-200

**DROP FORGED**  
**kadett**  
**BENCH - VISE**



**BENCH - VISE**

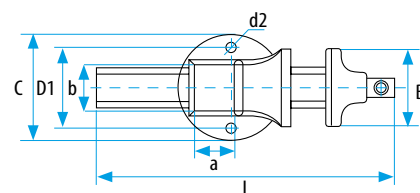
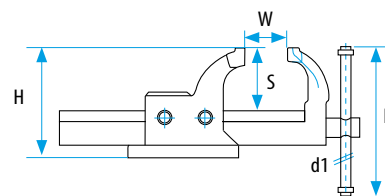
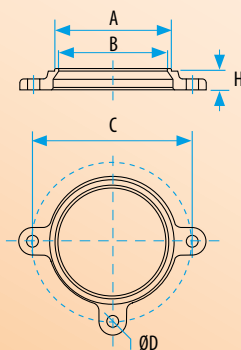
All-steel, drop forged (CF45 Steel).  
Jaws and anvil induction hardened (HRC 50-58).  
Adjustable jaw alignment system guarantees precision clamping.  
**LONG TIME GUARANTEE**



- Removable forged steel spindle nut.

**Swivel Base**

- Drop forged, infinitely variable rotation between 0° and 360°.  
Position lockable by special bolt- screw arm.



Part #	Size (Inch)	A	B	C	H	D Ø	lbs
KADS-100	4"	4.2"	4"	6"	.7"	.45"	1.7
KADS-115	4.5"	4.8"	4.6"	6.5"	.8"	.5"	2.2
KADS-125	5"	5.5"	5.1"	7.3"	.9"	.5"	2.8
KADS-135	5.5"	5.6"	5.4"	7.7"	.95"	.6"	3
KADS-150	6"	6.3"	6.1"	8.9"	1"	.6"	4.4
KADS-175	7"	7.4"	7.2"	9.8"	1.1"	.65"	5.7
KADS-200	8"	7.4"	7.2"	9.8"	1.1"	.65"	5.7



# kadett FIX

## PIPE and BENCH VISE



### PIPE and BENCH VISE

Pipe and Bench Vise with 2 welded jaws for clamping pipes guarantees precision parallel clamping.

#### kadett BENCH VISE

Part #		KADWSB-100	KADWSB-115	KADWSB-125	KADWSB-135	KADWSB-150	KADWSB-175	KADWSB-200
Size		4"	4.5"	5"	5.5"	6"	7"	8"
Jaw Width	B (inch)	4"	4.5"	5"	5.5"	6"	7"	8"
Jaw Opening	W (inch)	5"	5.5"	6.3"	6.7"	7.5"	8"	8"
Length	L (inch)	12"	14"	15"	16.5"	18.5"	20"	20"
Anvil Size	axb (inch)	1 x 2"	1.5 x 2"	1.5 x 2.5"	2 x 2.5"	2.5 x 3"	2.5 x 3.5"	2.5 x 3.5"
Base Diameter	C (inch)	4.5"	5"	5.5"	6"	7"	8"	8"
Hole Distance	D1 (inch)	3.5"	4"	4"	4.5"	5"	6.5"	6.5"
Hole Diameter	d2 (inch)	.45"	.5"	.5"	.6"	.64"	.68"	.68"
Screwhandle	d1 (inch)	.5"	.5"	.6"	.6"	.6"	.7"	.7"
Screwhandle Length	E (inch)	7.5"	9"	10.6"	10.6"	12.2"	13.2"	13.2"
Jaw Depth	S (inch)	2.6"	2.9"	2.9"	3.5"	3.8"	4.3"	4.3"
Vice Height	H (inch)	4.7"	5.6"	5.6"	6.6"	7.4"	8"	8"
Weight	lbs	11.4	17.1	20.5	30.8	40.8	55	57.2

#### kadett FIX PIPE and BENCH VISE

Part #		KADPLSB-100	KADPLSB-115	KADPLSB-125	KADPLSB-135	KADPLSB-150	KADPLSB-175	KADPLSB-200
min. Clamping Range	(inch)	3/8"	3/8"	3/8"	3/8"	3/8"	3/8"	3/8"
max. Clamping Range	(inch)	1 1/4"	1 1/2"	1 1/2"	1 1/2"	2 1/2"	3	3



## BENCH - VISE

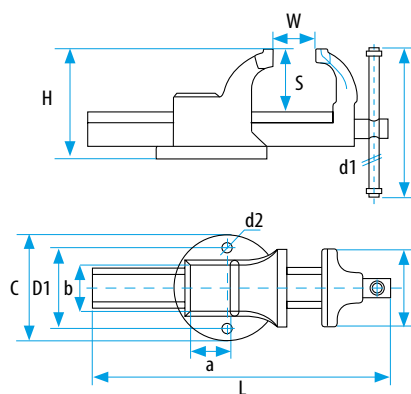


### BENCH - VISE

All-steel, drop forged (CF45 Steel). Jaws induction hardened (HRC 50-58). **LONG TIME GUARANTEE**

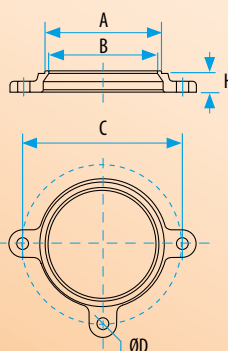
● economical Version

Part #			KANWSB-125	KANWSB-150
Size			5"	6"
Jaw Width	B (inch)		5"	6"
Jaw Opening	W (inch)		4.8"	7.5"
Length	L (inch)		13.4"	16.5"
Anvil Size	axb (inch)		1.5 x 2.5"	2 x 2.95"
Base Diameter	C (inch)		5.5"	6.5"
Hole Distance	D1 (inch)		4"	5"
Hole Diameter	d2 (inch)		.5"	.65"
Screwhandle	d1 (inch)		.6"	.6"
Screwhandle Length	E (inch)		8.3"	10.6"
Jaw Depth	S (inch)		2.7"	3.6"
Vice Height	H (inch)		5.2"	7"
Weight	lbs		19.4	37.5



## Swivel Base

- Drop forged, infinitely variable rotation between 0° and 360°. Position lockable by special bolt-screw arm.



Part #	Size (inch)	A	B	C	H	ØD	lbs
KANS-125	5"	4.2"	4"	6"	.9"	.45"	1.7
KANS-150	6"	5.3"	5.1"	7.3"	1"	.5"	2.8







## PIPE and BENCH VISE

High quality vise made from drop forged steel and surface-hardened for **long life**.

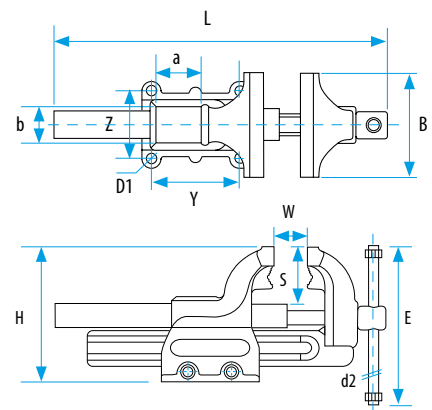
The **double acme thread screw** allows faster adjustment of the jaw opening and is enclosed to keep dirt and debris out of the mechanism. Pipe jaws **forged integral with the body**,

**Solid Body:** Drop-forged from high quality steel. Drop forged. Induction hardened. Solid with the body. Ideal for straightening or similar jobs requiring strong and flat surface.

**Unbreakable.**

- Designed with acme thread screw

Part #		K2WSB-100	K2WSB-120	K2WSB-140	K2WSB-160	K2WSB-180
Size		4"	4.8"	5.6"	6.4"	7.2"
Jaw Width	B (inch)	4"	4.8"	5.6"	6.4"	7.2"
Jaw Opening	W (inch)	5"	6"	8"	9"	9"
Length	L (inch)	16.6"	20.7"	26"	30.4"	30.4"
Anvil Size	axb (inch)	1 x 1.5"	1.88 x 1.65"	2.2 x 2.1"	2.7 x 2.2"	2.7 x 2.2"
Hole Distance	YxZ (inch)	2.8 x 2.3"	3.8 x 3"	4.7 x 3.7"	5.5 x 4.8"	5.8 x 4.5"
Hole Diameter	D1 (inch)	.4"	.5"	.5"	.55"	.55"
Screwhandle	d2 (inch)	.5"	.5"	.6"	.7"	.7"
Screwhandle Length	E (inch)	7.5"	7.5"	12.2"	13.2"	13.2"
Jaw Depth	S (inch)	2.2"	2.9"	3.4"	4.1"	4.1"
Vice Height	H (inch)	5.4"	6.7"	8"	9.5"	9.5"
Weight	~ lbs	11	19.8	35.2	57.3	63.9
min. Clamping Range	(inch)	Ø 16	Ø 16	Ø 18	Ø 18	Ø 22
max. Clamping Range	(inch)	Ø 40	Ø 58	Ø 80	Ø 98	Ø 98



## Swivel Base

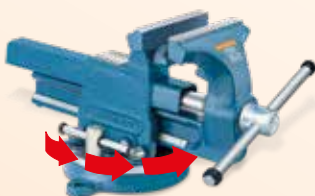
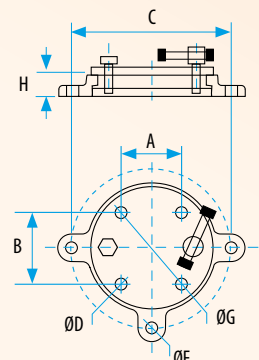
- Drop forged, infinitely variable rotation between 0° and 360°. Position lockable by special bolt- screw arm.



Metal



Plastic



Metal Part #	Size (inch)	A	B	C	D	H	F	G	Ibs	Plastic Part #
K2S-100	4"	2.3"	2.8"	6"	M8	.7"	4.8"	.45"	3.7	K2SP-100
K2S-120	4.8"	3"	3.8"	7.3"	M10	.9"	6"	.53"	5.9	K2SP-120
K2S-140	5.6"	3.7"	4.7"	8.7"	M10	.8"	7.2"	.5"	7.3	K2SP-140
K2S-160	6.4"	4.8"	5.5"	9.8"	M12	1.1"	8.5"	.7"	13.2	K2SP-160
K2S-180	7.2"	4.8"	5.5"	9.8"	M12	1.1"	8.5"	.7"	13.2	K2SP-180

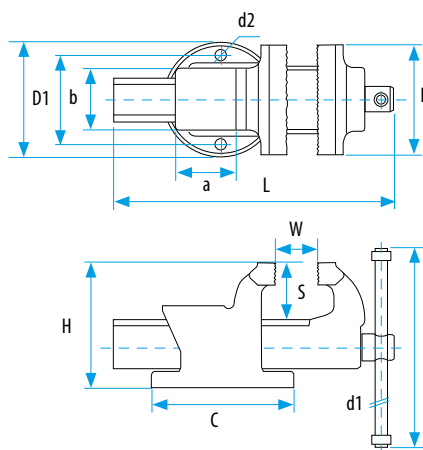


## CASTING VISE

- Material made of impact resistant Ductile iron (high tensile strength)
- Jaws and Anvil induction hardened (50-58 HRC)
- More anvil area
- Replaceable Nut made of forged steel
- Extra large jaw opening

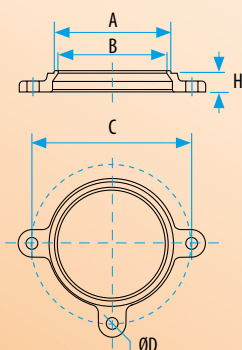


Part #		CASWSB-100	CASWSB-125	CASWSB-150	CASWSB-200
Size		4"	5"	6"	8"
Jaw Width	B (inch)	4"	5"	6"	8"
Jaw Opening	W (inch)	5"	6"	6.7"	7.5"
Length	L (inch)	12"	13"	15.3"	16.7"
Anvil Size	axb (inch)	2 x 2.5"	2 x 2.5"	3.7 x 3.5"	3.7 x 3.5"
Base Diameter	C (inch)	6"	6.3"	8.1"	8.7"
Hole Distance	D1 (inch)	3.6"	4"	5.4"	5.7"
Hole Diameter	d2 (inch)	.45"	.55"	.65"	.6"
Screwhandle	d1 (inch)	.5"	.5"	.6"	.6"
Screwhandle Length	E (inch)	7.5"	9"	10.6"	12.2"
Jaw Depth	S (inch)	2.3"	2.5"	2.9"	3.2"
Vice Height	H (inch)	5"	5.6"	6.9"	7.1"
Weight	lbs	14.3	20.2	35.3	47.4



## Swivel Base

- Drop forged, infinitely variable rotation between 0° and 360°.
- Position lockable by special bolt- screw arm.



Part #	Size (inch)	A	B	C	H	ØD	lbs
CASB-100	4"	4.2"	4"	6"	.7"	.45"	1.8
CASB-125	5"	4.8"	4.5"	6.5"	.8"	.53"	2.9
CASB-150	6"	5.3"	5.1"	7.3"	.8"	.53"	4.4
CASB-200	8"	6.6"	6.3"	8.7"	.8"	.53"	5.7



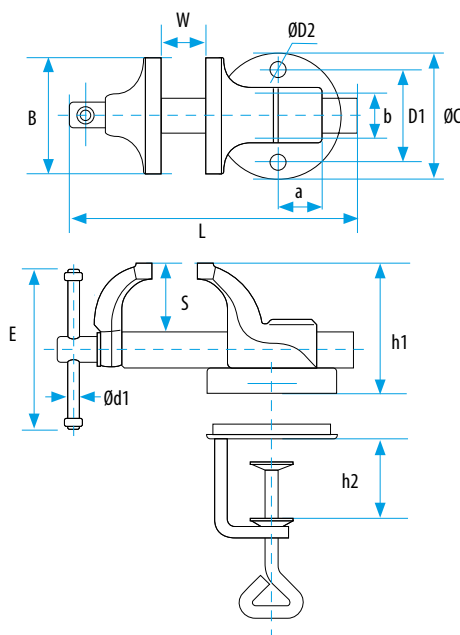


**CASTILLO**

## CASTING VISE

- Material made of impact resistant Ductile iron (high tensile strength) for the professional and the quality-conscious hobbyist. Facilitates many work in all mechanical and electronic workshops.

## Finemechanic's Vise



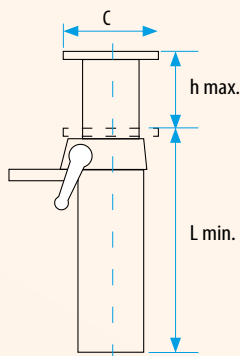
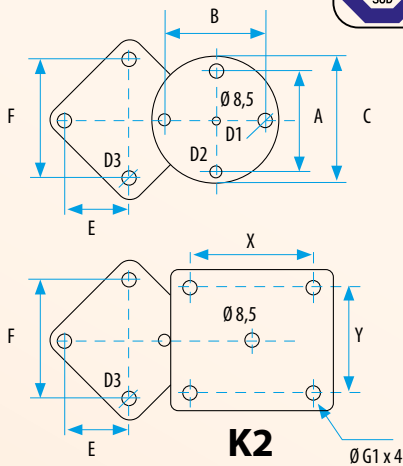
Part #		FM-50	FM-75
Size		2"	3"
Jaw Width	B (inch)	2"	3"
Jaw Opening	W (inch)	1.4"	1.8"
Length	L (inch)	5.8"	7.3"
Anvil Size	axb (inch)	.78 x .94"	.98 x 1.1"
Base Diameter	C (inch)	2.8"	3.5"
Hole Distance	D1 (inch)	1.9"	2.5"
Hole Diameter	D2 (inch)	.19"	.27"
Screwhandle	d1 (inch)	.23"	.31"
Screwhandle Length	E (inch)	2.75"	4"
Jaw Depth	S (inch)	1.2"	1.5"
Vice Height	h1 (inch)	2.4"	2.9"
max Clamp Height	h2 (inch)	1.6"	1.8"
Weight	lbs	2.2	3.9

- Maximum durability even for increased power work  
Can be swivelled for 360°, thereby optimal operating angle possible

## VARIANT Elevator

Fits K2, PRIMO, FORTISSIMO, KADETT vises.

- Automatic lifting device serves to set the vise to the correct working height.



## VARIANT ELEVATOR



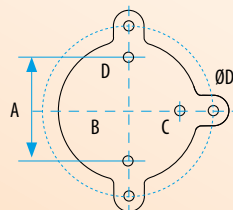
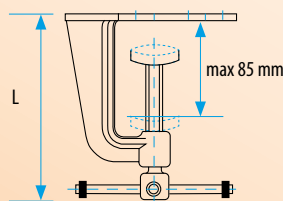
FORTISSIMO	KADETT	Size (inch)	PRIMO	K2	Size (inch)	A	Ø D2	B	Ø D1	E	F	X	Y	Ø D3	Ø G1	C	L	lbs
FAL - 100	KAL - 100	4-4.5"*	PAL-100	K2AL - 100	4"	3.6"	.4"	4"*	.5"*	2.5"	5.1"	2.8"	2.3"	.45"	.37*	5.5"	14"	19.4
FAL - 115*	KAL - 115*																	
FAL - 125	KAL - 125	5-5.5"*	PAL-120	K2AL - 120	4.8"	4.4"	.6"	4.7"*	.6"	2.5"	5.1"	3.8"	3"	.45"	.37*	6.4"	14"	20
FAL - 135*	KAL - 135*																	
FAL - 150	KAL - 150	6"	PAL-140*	K2AL - 140*	5.6"*	5.4"	.6"	5.7"*	.6"	2.5"	5.1"	4.7"	3.7"	.45"	.37*	7.2"	14"	20.7
			PAL-160*	K2AL - 160*	6.4"							5.5"	4.8"		.55*			

\* Dimensions B, D

## Clamping Screw

Fits PRIMO, FORTISSIMO, KADETT vises.

- Clamping screw for attaching vises to the bench without drilling work. For installation vises available also in red.



FORTISSIMO	Size (inch)	KADETT	PRIMO	Size (inch)	A	B	C	Ø D	lbs
FRTPCS-100	4"	66003140100	PRMPCS-100	4"	3.6"	5"	6"	M 10	3.1
FRTPCS-115	4.5"	66003140115			4"	5.6"	6.5"	M 12	3.3
FRTPCS-125	5"	66003140125	PRMPCS-120	4.8"	4.4"	6.2"	7.3"	M 12	3.7
FRTPCS-135	5.5"	66003140135			4.6"	6.6"	7.7"	M 14	4
			PRMPCS-140	5.6"	5.7"	5.3"	8.7"	M 12	4.6



# LIFT MOBIL

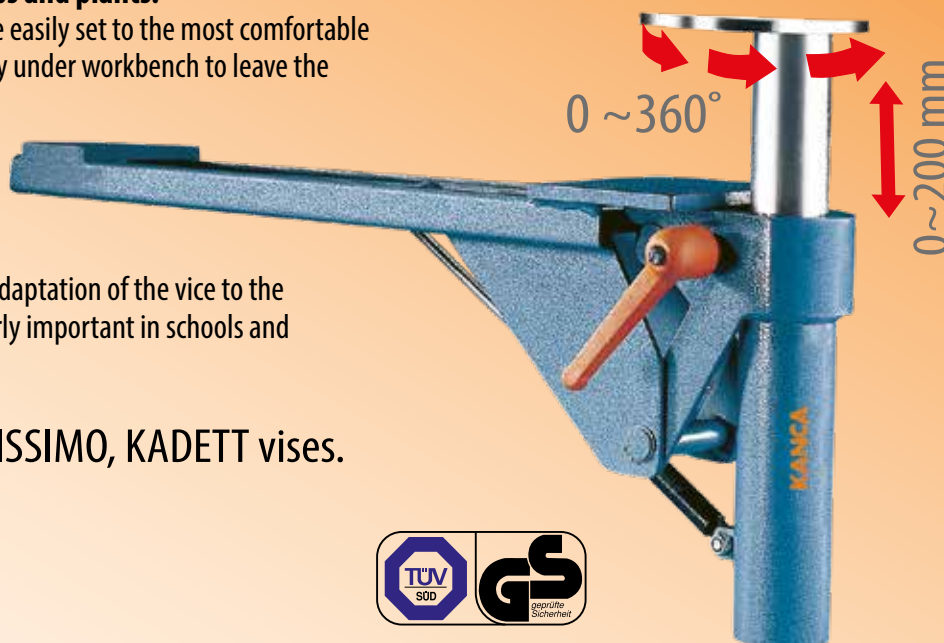
## ● Indispensable for any workbench

### Perfect quality for workshops and plants.

With LIFT-MOBIL the vice can be easily set to the most comfortable working height and folded away under workbench to leave the bench top free for other work.

**Use:** for the centimeter-exact adaptation of the vice to the ideal working height (particularly important in schools and workshops for apprentices).

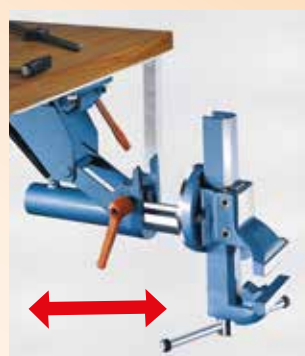
Fits K2, PRIMO, FORTISSIMO, KADETT vises.



After loosening the left safety clamping lever the vise can be easily adjusted into the desired working position.



At non usage the vise can be lowered by the right safety clamping lever under the workbench.

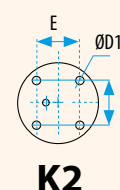
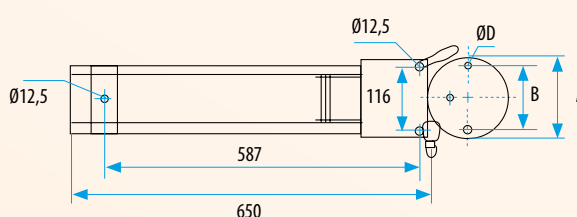
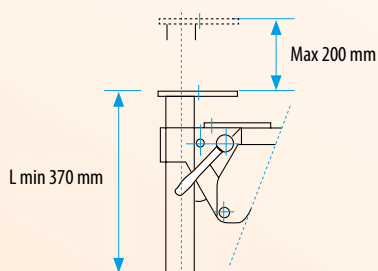


Effortlessly the vise is then shifted under the workbench.



In a few seconds the bench top gets free in full size for other works.

FORTISSIMO	KADETT	PRIMO	K2	Size (inch)	A	B	C	E	Ø D	Ø D1	lbs
FRTL-100	66003150100	PRMLM-100	K2LM-100	4"	4.8"	3.6"	2.3"	2.8"	M 10	M 8	30.4
FRTL-115	66003150115			4.5"	5.5"	4"			M 12		30.8
		PRMLM-120	K2LM-120	4.8"	5.7"	4.4"	3"	3.8"	M 12	M 10	31.3
FRTL-125	66003150125			5"	5.7"	4.4"			M 12		31.3



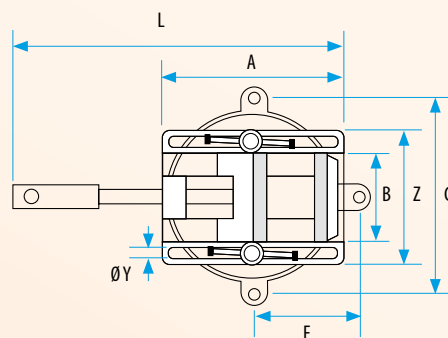
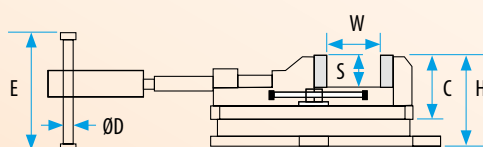
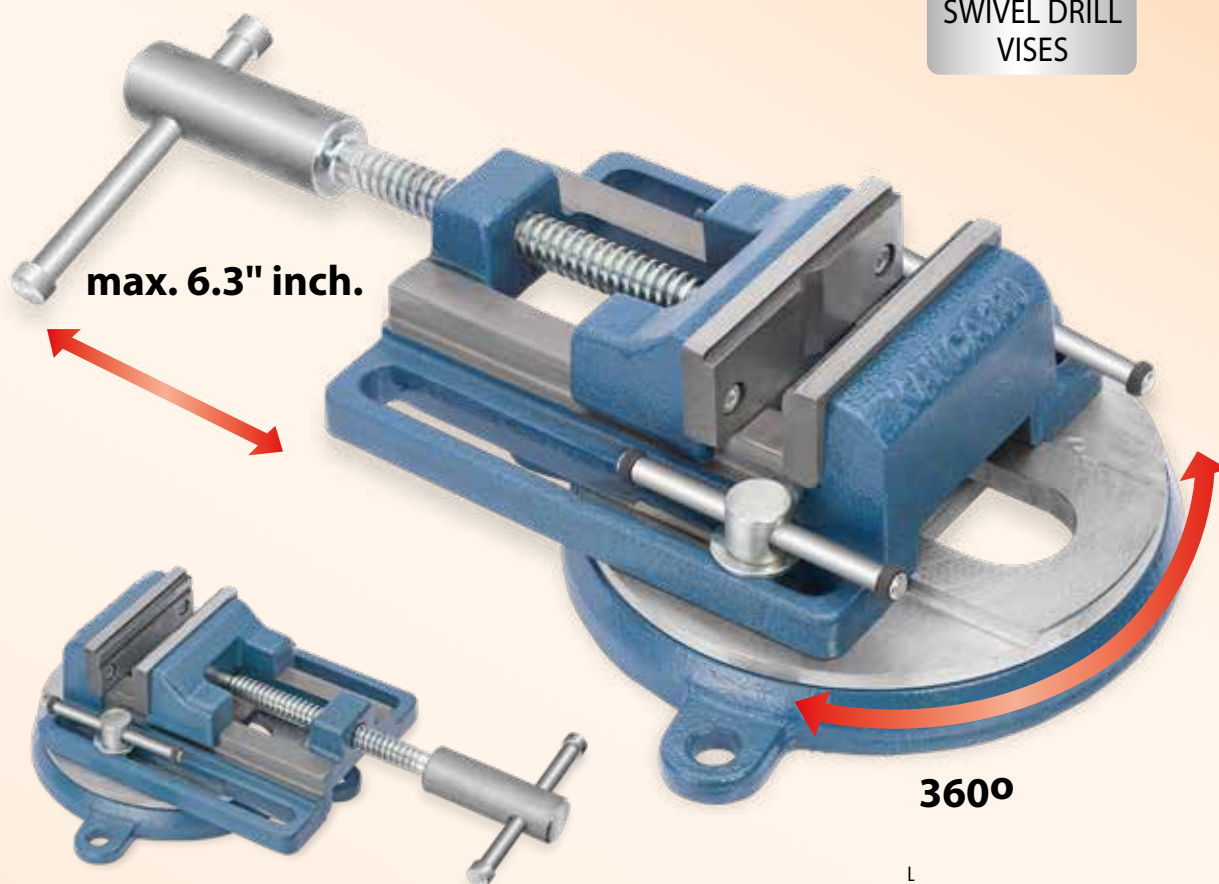
**K2**

## Swivel Drill Vises

- Ergonomic and more efficient with the 360° rotating system, Ability of 6.3" vertical move.



SWIVEL DRILL  
VISES



Part #	A (inch)	Z (inch)	E (inch)	ØD (inch)	C (inch)	H (inch)	F (inch)	G (inch)	L min. (inch)	Y (inch)	W max. (inch)	S (inch)	B (inch)	lbs
SDRL-100	7.6"	6.2"	2.7"	.4"	5"	3.8"	4.4"	8.7"	12"	.5"	4"	1.4"	4"	17.2

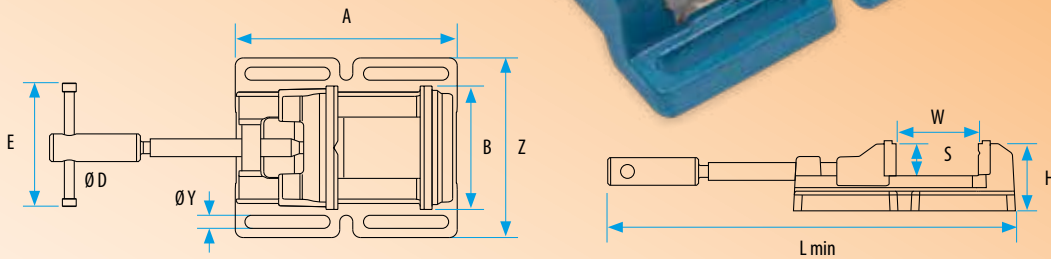




### Drill Press Vise

Rugged design and large workload capacity make the drill press vise perfect for the most difficult drilling, tapping or reaming operations.

- Frame and movable parts made of special cast iron, jaws of hardened alloy steel.
- Jaws hardened and ground.
- A hardened prism jaw for clamping round bar horizontally and vertically.
- Base designed with 6 screw holes.



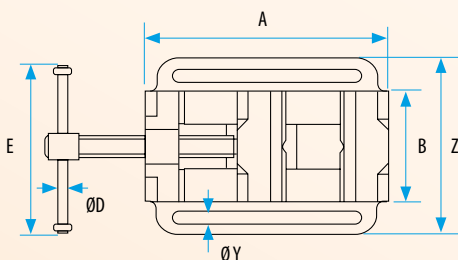
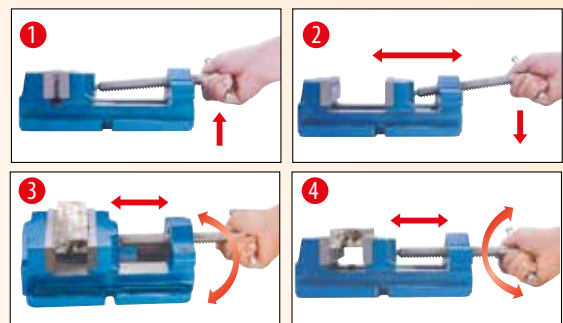
Part #	Size (inch)	AxZ (inch)	BxH (inch)	S (inch)	W max. (inch)	L min. (inch)	Ø D (inch)	E (inch)	Ø Y (inch)	lbs
DRL-80	3.2"	6.8x5.4"	3.2x2.6"	1.3"	3.2"	6.9"	.4"	5"	.5"	9.9
DRL-100	4"	7.6x6.1"	4x2.6"	1.3"	4"	8"	.4"	5"	.5"	11.9
DRL-125	5"	8.9x7.2"	5x2.7"	1.3"	5"	8.7"	.4"	7.3"	.5"	17.6
DRL-150	6"	11.9x8.1"	6x2.8"	1.9"	6"	16"	.4"	7.3"	.5"	25.8

## Quick Drill Vises

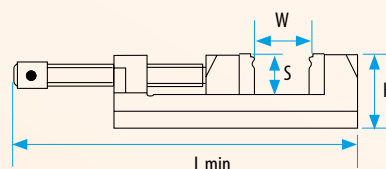
- Saving time by easily and quickly changing different worktools.

### How to use Quick Drill Vises?

- 1 Slightly lift the screw off the nut
- 2 Pull and open the jaw as required
- 3 Locate the workpiece between the jaws
- 4 Put and engage the screw on to the nut and clamp the vise



Part #	Size (inch)	AxZ (inch)	BxH (inch)	S (inch)	W max. (inch)	L min. (inch)	Ø Y (inch)	Ø D (inch)	E (inch)	lbs
QDRL-125	5"	10.2x7.5"	5x3.3"	1.9"	5"	12.4"	.4"	.4"	7.3"	25.35



## Right Angle Clamp

# RIGHT ANGLE CLAMP

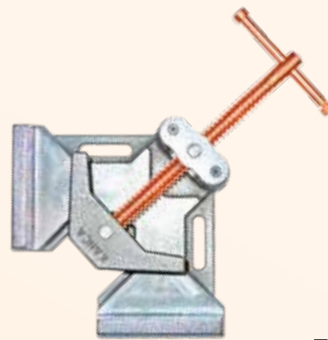
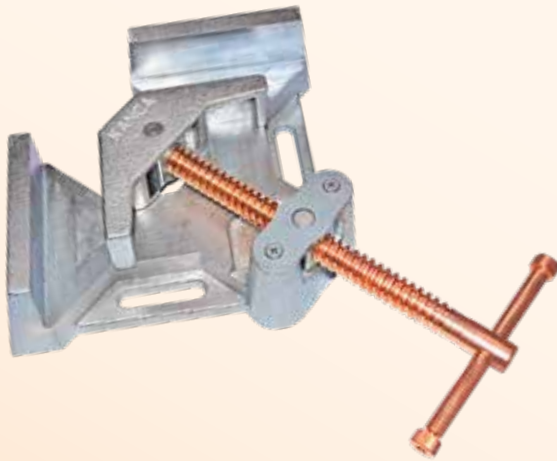
**Angle Clamp, 90 deg., Function For Welding, Holding, Fixing, And Aligning Material At An Exact Right Angle**

- Holds and aligns materials at a 90° angle
- Automatically adjusts to hold together work pieces of different widths.
- Sturdy jaws and base made from high grade cast iron.
- Copper plated spindles resist spatter
- Open design allows for use on T-joints

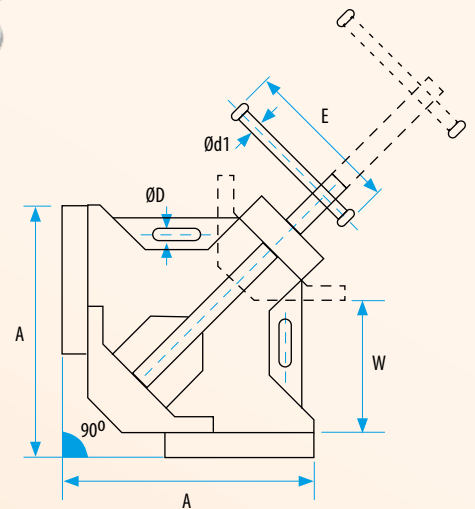
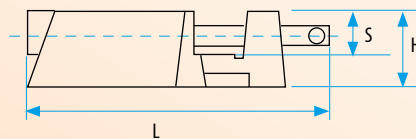
max. 3.7" inch.

NEW

90°



Code	Size (inch)	A (inch)	H (inch)	S (inch)	W max. (inch)	L min. (inch)	Ø D (inch)	Ø d1 (inch)	E (inch)	lbs
60211010090	3.7"	7.9"	2.37"	1.38"	3.7"	9.65"	0.4"	0.4"	5"	8.36





# Anvil & Vise

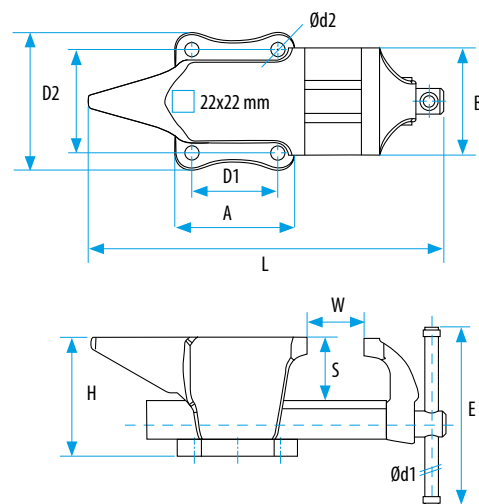


Happiness is doubled when shared

- All-steel, drop forged (CF45 Steel). Jaws and anvil induction hardened (HRC 50-60). Large anvil for straightening and other forming work.



Part #		ANV-125	
Size			5"
Jaw Width	B	(inch)	5"
Jaw Opening	W	(inch)	4"
Jaw Depth	S	(inch)	2.9"
Height	H	(inch)	5.5"
Length	L	(inch)	17.7"
Hole Distance	D1* D2	(inch)	4x4.3"
Screwhandle	d1	(inch)	.5"
Screwhandle Length	E	(inch)	9.5"
Hole Diameter	d2	(inch)	.5"
Table Size	A* B	(inch)	5.5*6.3"
Weight	lbs		37.5



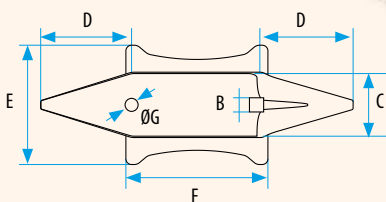
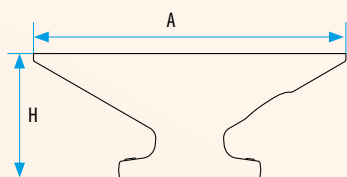
# anvil

DROP FORGED

- All steel drop-forged anvils with surface-hardened face.



**Material:** High quality forged steel Surface hardened: 50-60 HRC



Part #	A (inch)	H (inch)	C (inch)	D (inch)	ExF (inch)	ØG (inch)	□B (inch)	lbs	
DFA-20	15.4"	6.2"	3.2"	4.3"	5.5 x 6.3"	.78"	.87"	44	1
DFA-35	18.7"	8"	3.7"	5.5"	6.7 x 7.7"	.78"	.87"	77	1
DFA-50	21.7"	8.7"	4.3"	6.4"	8.3 x 9.8"	.9"	1"	110	1
DFA-75	24.6"	10.4"	5"	7.3"	9.3 x 10.8"	.9"	1"	165	1



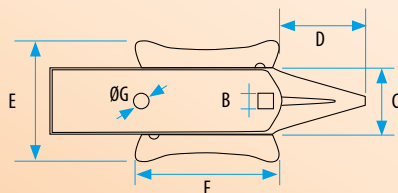
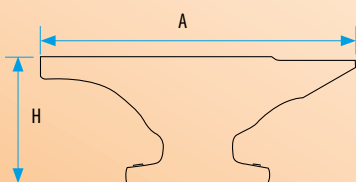
# UNICUS

DROP FORGED

- All steel drop-forged anvils with large surface-hardened face.



**Material:** High quality forged steel Surface hardened: 50-60 HRC

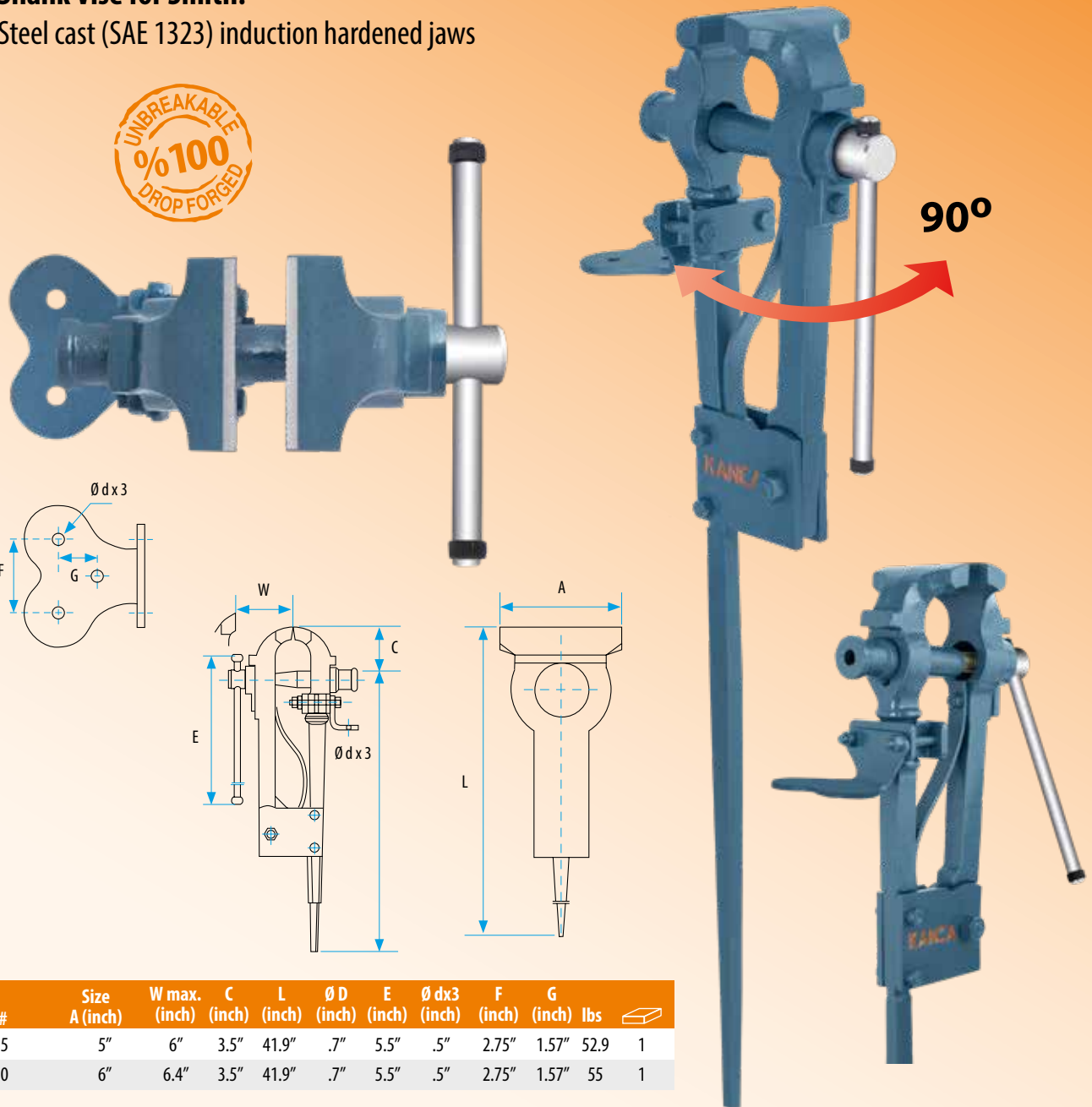


Part #	A (inch)	H (inch)	C (inch)	D (inch)	ExF (inch)	ØG (inch)	□B (inch)	lbs	
UNI-50	21.6"	8.7"	4.5"	6.3"	8.3 x 9.8"	0.9"	1"	110	1





- **Shank Vise for Smith:**  
Steel cast (SAE 1323) induction hardened jaws



Part #	Size A (inch)	W max. (inch)	C (inch)	L (inch)	Ø D (inch)	E (inch)	Ø d x 3 (inch)	F (inch)	G (inch)	lbs	
LV-125	5"	6"	3.5"	41.9"	.7"	5.5"	.5"	2.75"	1.57"	52.9	1
LV-150	6"	6.4"	3.5"	41.9"	.7"	5.5"	.5"	2.75"	1.57"	55	1



**NEW**

## Forged Steel Chisel Hardie

A new addition to Kanca Blacksmith product line to making the work easier for Blacksmiths!

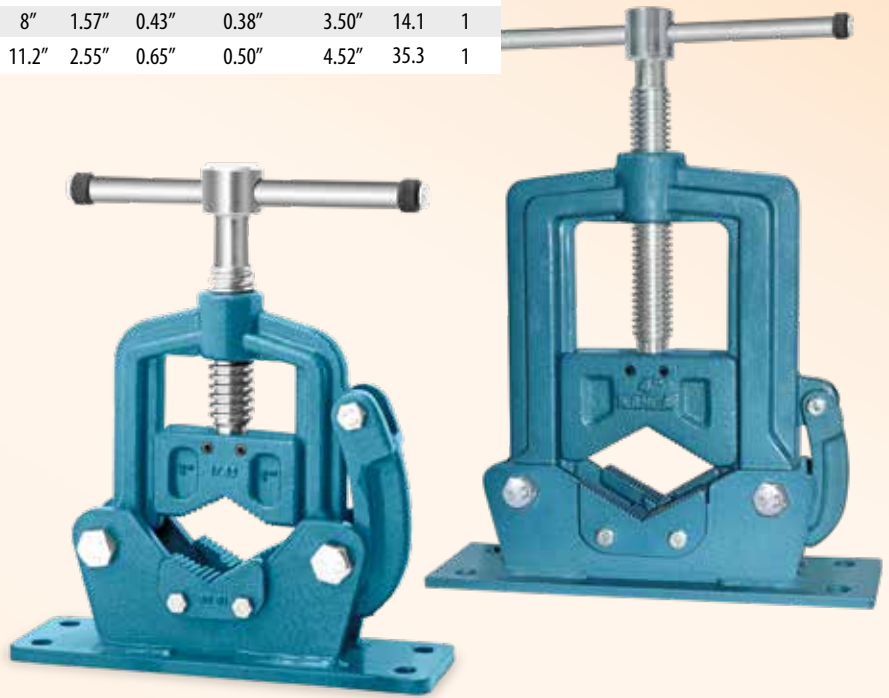
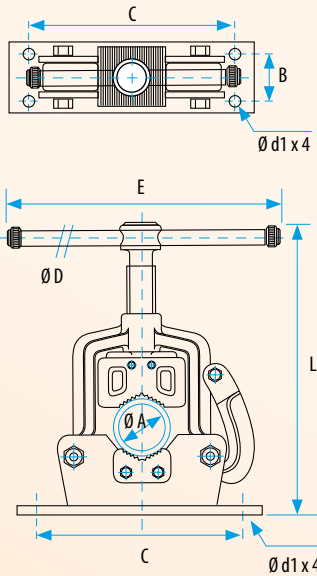
[www.kancaforging.com](http://www.kancaforging.com)



## Fold-Out Pipe Vise

- Made from high quality and drop-forged steel.  
Hardened frame and jaws.  
Adjustable through self-locking screws.

Part #	Size (inch)	Ø A (inch)	E (inch)	Ø D (inch)	L min (inch)	C (inch)	B (inch)	Ø d1 (inch)	min. Clamping Range	max. Clamping Range	lbs	
									(inch)	(inch)		
PV-2	2.4"	2"	7.50"	0.5"	11.2"	8"	1.57"	0.43"	0.38"	2.39"	11	1
PV-3	3.5"	3"	7.50"	0.59"	13.7"	8"	1.57"	0.43"	0.38"	3.50"	14.1	1
PV-4	4.4"	4"	10.6"	0.59"	19.5"	11.2"	2.55"	0.65"	0.50"	4.52"	35.3	1

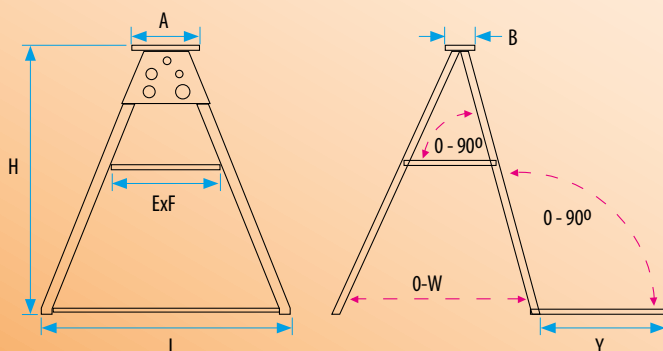


## Portable Workstand

### Portable Workstand

Working support for pipe vises. Suitable for 2" and 3" fold-out pipe vises.  
An indispensable tool for works on building sites. Equipped with storage shelf for tools and hinged floor board for stability.

Part #	AxB (inch)	H (inch)	L (inch)	ExF (inch)	Y (inch)	lbs
PVS-2	9.0 x 2.75"	37"	34"	15.4 x 11.4"	23.2"	48.5
PVS-3	9.0 x 2.75"	37"	34"	15.4 x 11.4"	23.2"	51.6



## Bolt Cutters

Bolt Cutters are designed for cutting rod, wire mesh, concrete form ties, cable and bolts with quick and easy handle. Drop forged, heat-treated jaws (HRC 54-58) made of hardened alloy steel guarantee long durability. Lever handles additional strengthened by cold drawing.

... we are specialized in steel cutting



N/mm <sup>2</sup> 750 19 HRC Soft	N/mm <sup>2</sup> 1260 40 HRC Medium
--	---

Part #	(inch)	L (inch)	Max. Cutting Capacity (Ø inch)		lbs/Piece	
BC-7	18"	18.5"	Ø 7.0	Ø 6.0	3.5	5
BC-10	26"	26.4"	Ø 10.0	Ø 8.0	5.1	5
BC-12	32"	33.5"	Ø 12.0	Ø 10.0	11.2	5
BC-14	42"	42.3"	Ø 14.0	Ø 10.0	13.3	5
BC-16	48"	48.4"	Ø 16.0	Ø 10.0	25.4	1

Blade Drop-Forged  
HRC 54-58 Hardened

Steel Bolt HRC 34-38  
Hardened

Forged Steel Joint  
HRC 33-38 Hardened

Cold-Drawn Steel  
Tubular Handle




- Ergonomischer Kunststoffgriff
- Ergonomic Plastic Handle Sleeves



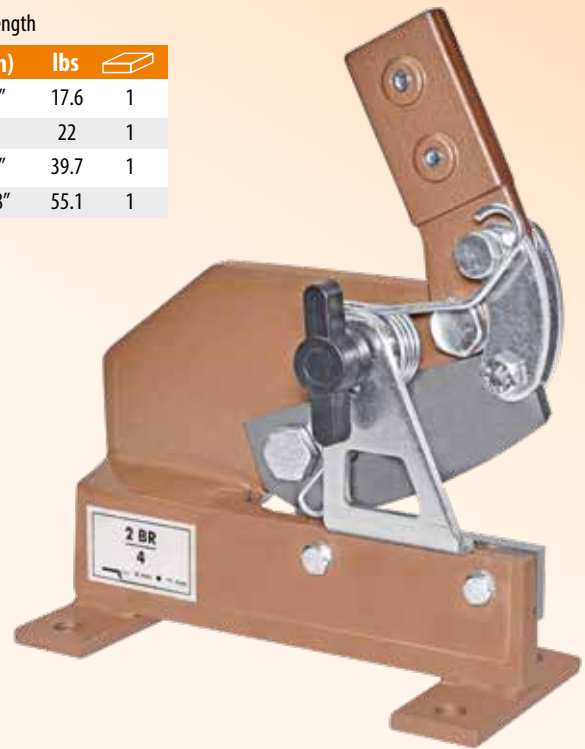


## Shear

### Metal Shears

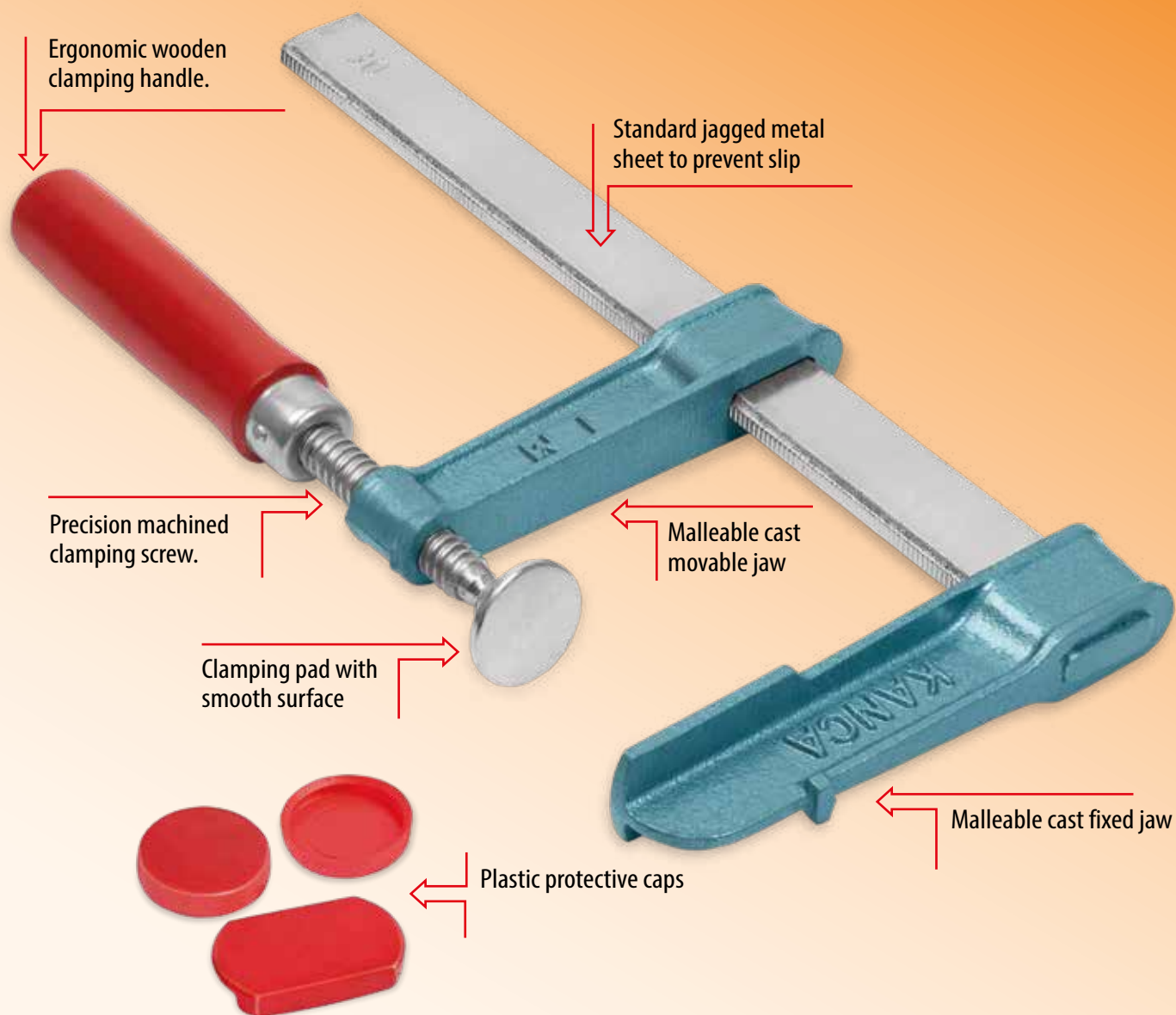
		Plate	Sheet Metal	Round	Blade Length		
Part #	Model	(inch)	(inch)	(inch)	(inch)	lbs	
MS - 2BR4	2BR4	.15"	2 x .15"	.4"	4.7"	17.6	1
MS - 2BR5	2BR5	.19"	2 x .19"	.4"	6"	22	1
MS - 2BR6	2BR6	.23"	2.75 x .23"	.5"	7.2"	39.7	1
MS - 3BR4-300	3BR/4-300	.19"	2.75 x .15"	.5"	11.8"	55.1	1

- Robust, stable body from high quality steel.
- Swinging and play-free slide guidance (low friction).
- Sharpened blades from high-grade hardened and tempered steel.
- Warning: Shearing dimensions mentioned in table only apply to steel St 50 max. 150 HB hardened.
- Can cut plate, sheet metal, square, round and L and T profiles depending on the model.
- Hand lever with weight balance spring for safety and easy cutting, all turning bolts adjustable, all shear types with an infinitely variable hold down bar.



## Welder's Choice; Heavy Duty Clamp with Spatter-Resistant Screw

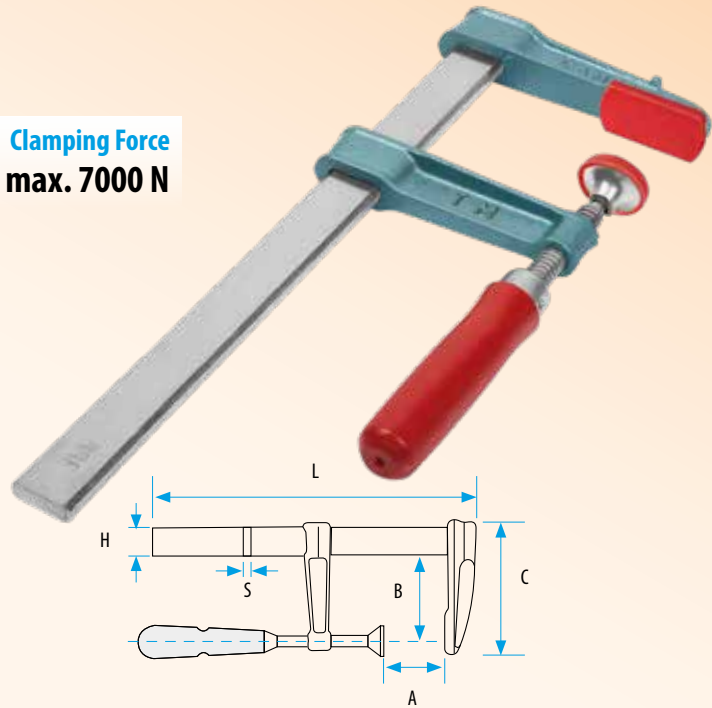




## Carpenter's Sliding Clamp

	A	B	HxS	L	C		
Part #	(inch)	(inch)	(inch)	(inch)	(inch)	lbs	
CSC - 200	8"	4.72"	1.38 x .43	11.8"	7.28"	5.62	6
CSC - 250	10"	4.72"	1.38 x .43	13.8"	7.28"	5.84	6
CSC - 300	12"	4.72"	1.38 x .43	15.7"	7.28"	6.17	6
CSC - 400	16"	4.72"	1.38 x .43	19.7"	7.28"	6.83	6
CSC - 500	20"	4.72"	1.38 x .43	23.6"	7.28"	7.27	6
CSC - 600	24"	4.72"	1.38 x .43	27.5"	7.28"	7.93	6
CSC - 700	28"	4.72"	1.38 x .43	31.5"	7.28"	8.6	6
CSC - 800	32"	4.72"	1.38 x .43	35.4"	7.28"	9.25	6
CSC - 900	36"	4.72"	1.38 x .43	39.4"	7.28"	9.81	6
CSC - 1000	40"	4.72"	1.38 x .43	43.3"	7.28"	10.58	6
CSC - 1100	44"	4.72"	1.38 x .43	47.2"	7.28"	11.02	6
CSC - 1200	48"	4.72"	1.38 x .43	51.2"	7.28"	11.68	6
CSC - 1300	52"	4.72"	1.38 x .43	55.1"	7.28"	12.34	6
CSC - 1400	56"	4.72"	1.38 x .43	59.1"	7.28"	13.12	6
CSC - 1500	60"	4.72"	1.38 x .43	63.0"	7.28"	13.67	6
CSC - 2000	80"	4.72"	1.38 x .43	82.7"	7.28"	16.75	6

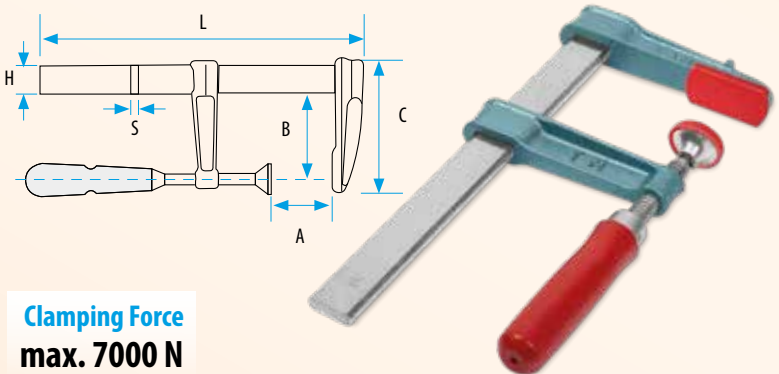
**Clamping Force**  
**max. 7000 N**



## Carpenter's Sliding Clamp Light

	A	B	HxS	L	C		
Part #	(inch)	(inch)	(inch)	(inch)	(inch)	lbs	
LSC - 100	4"	3.2"	1 x .23"	7"	5"	1.4	12
LSC - 150	6"	3.2"	1 x .23"	9"	5"	1.5	12
LSC - 200	8"	3.2"	1 x .23"	11.0"	5"	1.63	12
LSC - 250	10"	3.2"	1 x .23"	13.0"	5"	1.78	12
LSC - 300	12"	3.2"	1 x .23"	15.0"	5"	1.90	12
LSC - 350	14"	3.2"	1 x .23"	16.9"	5"	1.98	12
LSC - 400	16"	3.2"	1 x .23"	18.9"	5"	2.12	12

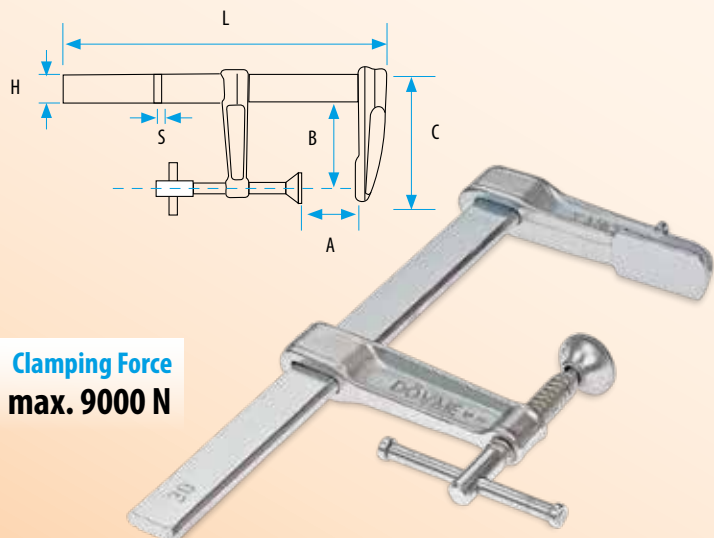
**Clamping Force**  
**max. 7000 N**



## Medium Duty Clamp / Forged

	A	B	HxS	L	C		
Part #	(inch)	(inch)	(inch)	(inch)	(inch)	lbs	
DFC - 200	8"	4.72"	1.38 x .43"	11.8"	7.28"	5.62	6
DFC - 250	10"	4.72"	1.38 x .43"	13.8"	7.28"	5.84	6
DFC - 300	12"	4.72"	1.38 x .43"	15.7"	7.28"	6.17	6
DFC - 400	16"	4.72"	1.38 x .43"	19.7"	7.28"	6.83	6
DFC - 500	20"	4.72"	1.38 x .43"	23.6"	7.28"	7.27	6
DFC - 600	24"	4.72"	1.38 x .43"	27.5"	7.28"	7.93	6
DFC - 700	28"	4.72"	1.38 x .43"	31.5"	7.28"	8.6	6
DFC - 800	32"	4.72"	1.38 x .43"	35.4"	7.28"	9.25	6
DFC - 900	36"	4.72"	1.38 x .43"	39.4"	7.28"	9.81	6
DFC - 1000	40"	4.72"	1.38 x .43"	43.3"	7.28"	10.58	6
DFC - 1100	44"	4.72"	1.38 x .43"	47.2"	7.28"	11.02	6
DFC - 1200	48"	4.72"	1.38 x .43"	51.2"	7.28"	11.68	6
DFC - 1300	52"	4.72"	1.38 x .43"	55.1"	7.28"	12.34	6
DFC - 1400	56"	4.72"	1.38 x .43"	59.1"	7.28"	13.12	6
DFC - 1500	60"	4.72"	1.38 x .43"	63.0"	7.28"	13.67	6
DFC - 2000	80"	4.72"	1.38 x .43"	82.7"	7.28"	16.75	6

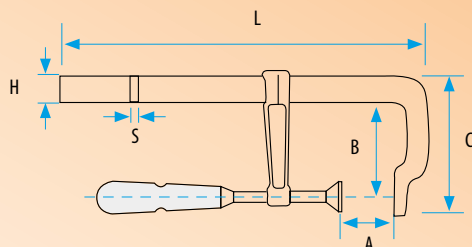
**Clamping Force**  
**max. 9000 N**





## Light Clamp / Forged

	A	B	HxS	L	C		
Part #	(inch)	(inch)	(inch)	(inch)	(inch)	lbs	
LDC-160	6.4"	3.2"	.6x.3"	8.7"	4.3"	1.35	12
LDC-200	8"	3.2"	.6x.3"	10.3"	4.3"	1.43	12
LDC-250	10"	3.2"	.6x.3"	12.2"	4.3"	1.54	12
LDC-300	12"	3.2"	.6x.3"	14.2"	4.3"	1.65	12



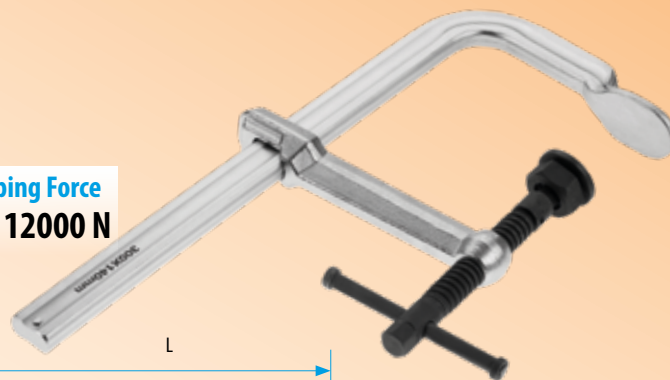
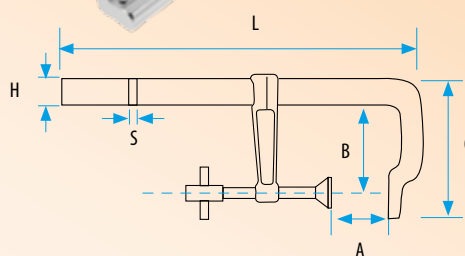
**Clamping Force**  
**max. 6000 N**



## Heavy Duty Clamp / Forged

	A	B	HxS	L	C		
Part #	(inch)	(inch)	(inch)	(inch)	(inch)	lbs	
HDC-200	8"	5.5"	1.17x.56"	13.0"	7.68"	5.62	6
HDC-250	10"	5.5"	1.17x.56"	14.8"	7.68"	5.84	6
HDC-300	12"	5.5"	1.17x.56"	17.2"	7.68"	6.17	6
HDC-400	16"	5.5"	1.17x.56"	20.9"	7.68"	6.83	6
HDC-500	20"	5.5"	1.17x.56"	24.8"	7.68"	7.27	6
HDC-600	24"	5.5"	1.17x.56"	29.0"	7.68"	7.93	4
HDC-800	32"	5.5"	1.17x.56"	36.6"	7.68"	9.23	4
HDC-1000	40"	5.5"	1.17x.56"	44.5"	7.68"	10.58	4
HDC-1200	48"	5.5"	1.17x.56"	52.4"	7.68"	11.68	4

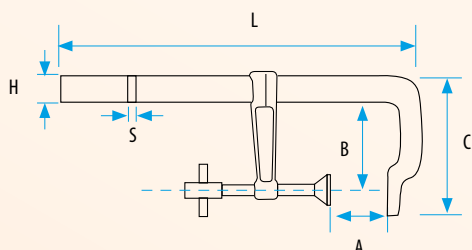
**Clamping Force**  
**max. 12000 N**



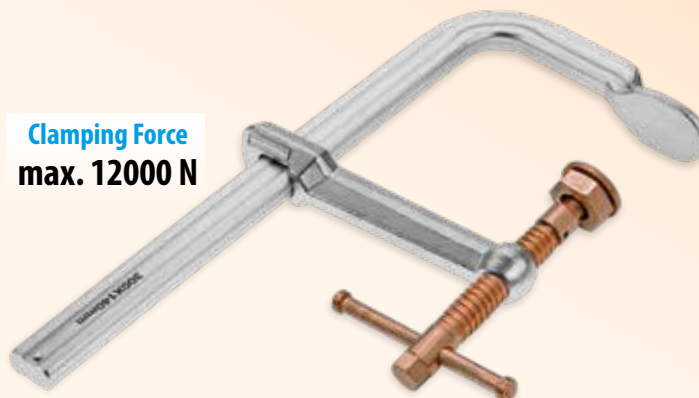
## Heavy Duty Clamp / Forged

### Copper-Plated

	A	B	HxS	L	C		
Part #	(inch)	(inch)	(inch)	(inch)	(inch)	lbs	
HDC-200-C	8"	5.5"	1.17x.56"	13.0"	7.68"	5.62	6
HDC-300-C	12"	5.5"	1.17x.56"	17.2"	7.68"	6.17	6
HDC-600-C	24"	5.5"	1.17x.56"	29.0"	7.68"	7.93	4



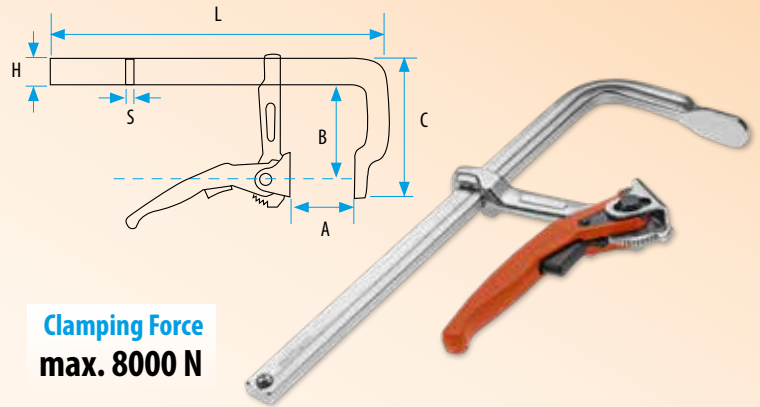
**Clamping Force**  
**max. 12000 N**



- Copper-plated spindle prevents weld spatter from sticking

## Quick Clamp / Forged

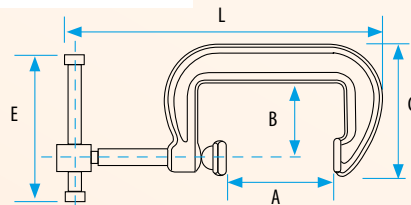
Part #	A (inch)	B (inch)	HxS (inch)	L (inch)	C (inch)	lbs	
QDC-160	6.4"	3.2"	.6 x .3"	8.7"	4"	4.85	6
QDC-200	8"	4.72"	.8 x .4"	11.7"	5.7"	5.5	6
QDC-250	10"	5.5"	1 x .5"	13.1"	7.7"	6.17	6
QDC-300	12"	5.5"	1 x .5"	15.6"	7.7"	6.6	6
QDC-400	16"	4.72"	1 x .5"	19.5"	6.9"	7.49	6
QDC-500	20"	4.72"	1 x .5"	23.5"	6.9"	8.15	6
QDC-600	24"	4.72"	1 x .5"	27.4"	6.9"	9.04	4
QDC-800	32"	4.72"	1.1 x .5"	34.5"	6.9"	10.36	4
QDC-1000	40"	4.72"	1.1 x .5"	43.1"	6.9"	11.46	4



## Forged C-Clamp

Part #	A (inch)	B (inch)	E (inch)	L (inch)	C (inch)	lbs	
FC-75	3"	1.5"	3.7"	7.3"	2.4"	4.85	1
FC-100	4"	2.4"	4.5"	8.7"	3.5"	5.5	1
FC-150	6"	2.8"	5.1"	12.0"	4"	6.2	1
FC-200	8"	3.1"	6.1"	14.5"	5"	7.5	1
FC-250	10"	3.6"	6.3"	17.4"	6"	8.2	1

**Clamping Force**  
max. 7000 N



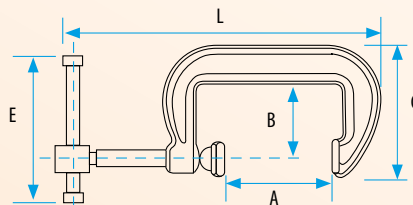
## Forged C-Clamp

### Copper-Plated

- Copper-plated spindle prevents weld spatter from sticking

Part #	A (inch)	B (inch)	E (inch)	L (inch)	C (inch)	lbs	
FC-150-C	6"	2.8"	5.1"	12.0"	4"	6.2	1
FC-200-C	8"	3.1"	6.1"	14.5"	5"	7.5	1
FC-250-C	10"	3.6"	6.3"	17.4"	6"	8.2	1

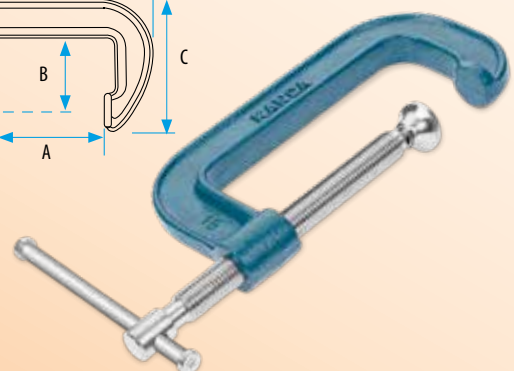
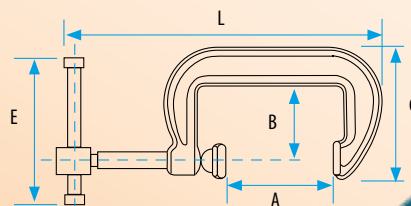
**Clamping Force**  
max. 7000 N



## C-Clamp (Cast)

Part #	A (inch)	B (inch)	E (inch)	L (inch)	C (inch)	lbs	
CC-50	2"	1.5"	5.0"	6.1"	2.4"	2.65	1
CC-100	4"	2.4"	5.0"	8.5"	3.5"	3.3	1
CC-150	6"	2.8"	5.0"	10.7"	4"	4.0	1
CC-200	8"	3.1"	6.1"	13.6"	5"	4.6	1
CC-250	10"	3.6"	6.1"	15.8"	6"	7.0	1
CC-300	12"	3.8"	6.1"	18.0"	6.5"	8.0	1

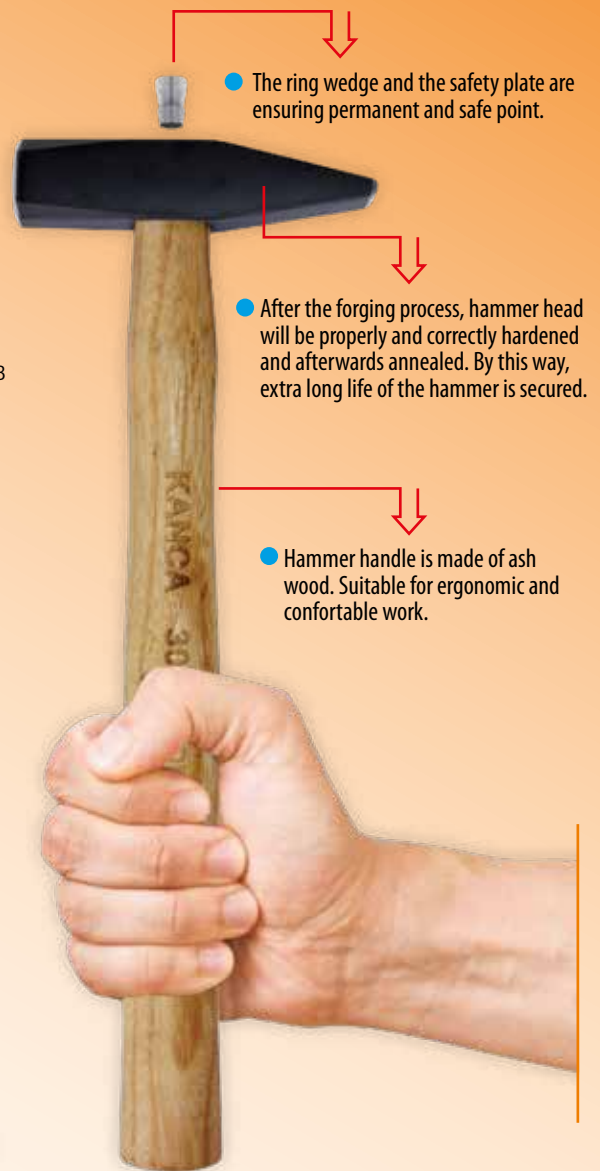
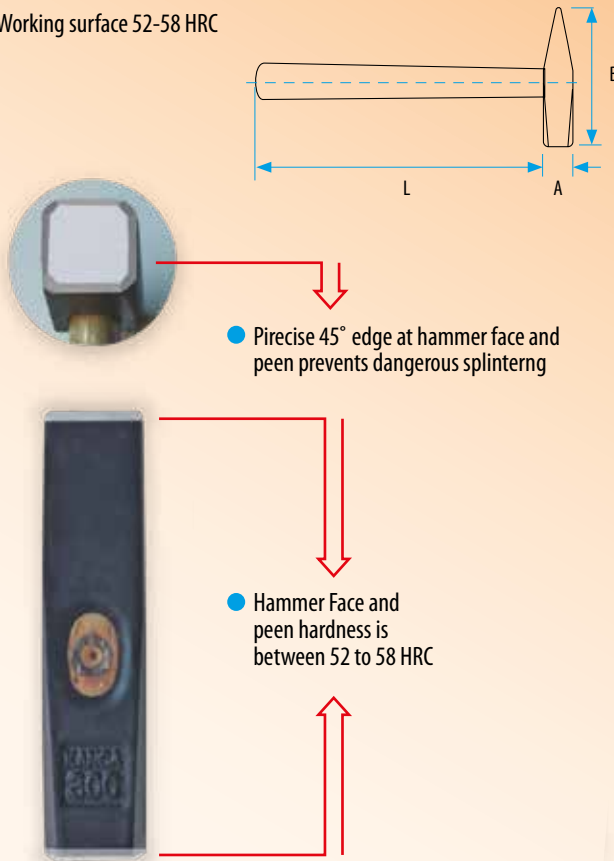
**Clamping Force**  
max. 7000 N



## Machinist Hammers

Part #	L (inch)	B (inch)	lbs	lbs	
HAM - 200	11.0"	3.7"	.44	.59	12
HAM - 300	12.0"	4.1"	.66	.92	12
HAM - 500	12.6"	4.6"	1.1	1.40	12
HAM - 1000	14.0"	5.3"	2.2	2.50	6
HAM - 1500	14.8"	5.7"	3.3	3.60	6
HAM - 2000	15.5"	6.1"	4.4	4.80	4

- DIN 1041, Working surface 52-58 HRC



## VICE and CLAMP DISPLAY



The continuous process of improving our products, meeting the needs of our customers and the best technical innovations mean that the products included in this catalogue (appearance, technical characteristics, weights and dimensions) may be altered without prior notice.



## EXHIBIT 1

### MANUFACTURER'S LIMITED WARRANTY

KANCA EL ALETLERİ DÖVME ÇELİK VE MAKİNA SAN. A.Ş. ("Kanca" or "Manufacturer") warrants that the purchased Kanca product (the "Product") sold to the first end user ("BUYER") will be free of manufacturing defects in workmanship and materials under normal use subject to limitations described below and will be fitted and maintained strictly in accordance with the manufacturer's instructions for a period as provided in Section IV of this Limited Warranty.

Manufacturer's obligations under this Limited Warranty apply only to the first end user of the Product and Manufacturer's obligations become void on the transfer or sale of the Product or the use of the Product by any party other than BUYER.

#### I. MAINTENANCE REQUIREMENTS

(A) BUYER'S waivers, obligations and representations, including, but not limited to, those contained in paragraph V, paragraph VI, paragraph VII, and paragraph VIII of this Limited Warranty apply regardless of any condition, but that the express limited warranties contained in the preamble, paragraph II and paragraph III of this Limited Warranty apply only if:

(1) The Product is not misused or abused, and there is no evidence of mishandling, neglect, modification or repair without the approval of Manufacturer, or damage done to the product by anyone other than Manufacturer.

#### II. METHOD FOR OBTAINING WARRANTY SERVICE

(A) To obtain warranty service under this Limited Warranty, BUYER must provide Kanca Forging USA, Inc. with a written notice of any alleged defect with the serial and model number of the alleged defective Product, within the warranty period stated in Section

IV and within ten (10) days of its discovery. If such serial and model number is not provided by BUYER, the request will be treated as improper service request and no service will be rendered by Manufacturer. Upon receiving the written notice, Kanca Forging USA, Inc. shall immediately contact Manufacturer regarding the alleged defect.

(B) Within a reasonable period of time upon learning the alleged defect, at Manufacturer's option, Manufacturer may contact BUYER via phone or email and arrange for the alleged defective product to be sent to Kanca Forging USA, Inc. for examination.

#### III. WARRANTY SERVICE PROVIDED

(A) If the Product shall be proved in Manufacturer's sole discretion to be defective, within the applicable warranty period described below, Manufacturer's obligations under this Limited Warranty shall be limited to either repairing or replacing the Product, at Manufacturer's sole discretion, if such defect was caused solely by defective workmanship and materials. In the event Manufacturer chooses to replace the Product, BUYER shall be responsible for all costs associated with transporting the Product to the business location of Kanca Forging USA, Inc. Such repair or replacement shall be Manufacturer's sole obligation and BUYER's exclusive remedy hereunder and shall be conditioned upon BUYER's fulfilling its obligations under Manufacturer's Warranty Claim Procedures.

(B) Pursuant to Subsection (A), Manufacturer's warranty services will specifically include providing BUYER with alternative parts of comparable quality to cover the remainder of the warranty period and/or carry out necessary repairs of the Product. BUYER shall be responsible for round-trip freight, insurance and any other shipping charges related to Manufacturer's obligations under this warranty.

#### IV. WARRANTY PERIOD

(A) This Limited Warranty of the Product, and any implied warranties provided to BUYER by state law not otherwise excluded or disclaimed in this Limited Warranty, shall apply for

(1) In the case of Kanca branded (i) bench vises (excluding Castillo vises), (ii) drill vises, (iii) pipe vises, (iv) anvils, (v) clamps (excluding C-clamps), and (vi) hammers, a lifetime guarantee.

(2) For all other products, for period of one (1) year from the date the BUYER accepts the shipment and receives the product.

#### V. EXCLUSIONS FROM WARRANTY

(A) The following is not included under this Limited Warranty:

(1) Use by personnel without proper knowledge of how to operate the Product

(2) Unauthorized disassembly or repair

(3) Damage due to improper handling;

(4) Normal wear and tear;

(5) Damage as a result of repair or part replacement not authorized by Manufacturer;

(6) Misuse or abuse by the end-user;

(7) Physical damage to the Product as a result of unreasonable use and/or negligence and;

(8) Operation or maintenance which is not in accordance with Manufacturer's written recommendations and restrictions as contained in Manufacturer's user manuals or any signage on the Product itself.

#### VI. LIMITATIONS ON WARRANTY

(A) This Limited Warranty is provided by Manufacturer, and it contains the only express warranty provided to BUYER by Manufacturer. Manufacturer does not authorize any other person, including sales representatives, to give any other warranties on Manufacturer's behalf.

MANUFACTURER DISCLAIMS ANY EXPRESS WARRANTY NOT PROVIDED HEREIN AND ANY IMPLIED WARRANTY, GUARANTY OR REPRESENTATION AS TO PERFORMANCE, QUALITY AND ABSENCE OF HIDDEN DEFECTS, AND ANY REMEDY FOR BREACH OF CONTRACT, WHICH BUT FOR THIS PROVISION, MIGHT ARISE BY IMPLICATION, OPERATION OF LAW, CUSTOM OF TRADE OR COURSE OF DEALING, INCLUDING IMPLIED WARRANTIES OF WORKMANLIKE QUALITY, MERCHANTABILITY, AND FITNESS FOR A PARTICULAR PURPOSE.

MANUFACTURER FURTHER DISCLAIMS, ANY RESPONSIBILITY FOR LOSSES, EXPENSES, INCONVENIENCES, SPECIAL, INDIRECT, SECONDARY OR CONSEQUENTIAL, INCIDENTAL, AND CONTINGENT DAMAGES WHATSOEVER, INCLUDING DAMAGES ARISING FROM OWNERSHIP OR USE OF PRODUCT.

IMPLIED WARRANTIES IN JURISDICTIONS WHERE THEY MAY NOT BE DISCLAIMED SHALL BE IN EFFECT ONLY FOR THE DURATION OF THE EXPRESS WARRANTY SET FORTH HEREIN.

IF BUYER HAS A CLAIM UNDER THIS LIMITED WARRANTY OR UNDER ANY IMPLIED WARRANTIES PROVIDED TO BUYER BY STATE LAW, BUYER MAY NOT FILE A COURT ACTION BASED ON THAT CLAIM ANY LATER THAN ONE (1) YEAR AFTER BUYER'S RIGHT TO FILE A COURT ACTION ACCRUES. IN THOSE STATES WHICH DO NOT ALLOW THIS LIMITATION ON THE TIME PERIOD FOR FILING A COURT ACTION, THIS PROVISION IS INAPPLICABLE.

#### VII. LIABILITY AND REMEDIES

MANUFACTURER'S LIABILITY WITH RESPECT TO THE PRODUCT SOLD TO BUYER AND ANY SERVICES PROVIDED BY MANUFACTURER SHALL BE LIMITED TO THE WARRANTY PROVIDED HEREIN.

MANUFACTURER SHALL NOT BE SUBJECT TO ANY OTHER OBLIGATIONS OR LIABILITIES, WHETHER ARISING OUT OF BREACH OF CONTRACT, WARRANTY, TORT (INCLUDING NEGLIGENCE AND STRICT LIABILITY) OR OTHER THEORIES OF LAW, WITH RESPECT TO PRODUCTS SOLD OR SERVICES RENDERED BY MANUFACTURER, OR ANY UNDERTAKING, ACTS OR OMISSIONS RELATING THERETO.

WITHOUT LIMITING THE FOREGOING, MANUFACTURER SPECIFICALLY DISCLAIMS ANY LIABILITY FOR PROPERTY OR PERSONAL INJURY DAMAGES, PENALTIES, SPECIAL OR PUNITIVE DAMAGES, DAMAGES FOR LOST PROFITS OR REVENUES, SERVICES, DOWN TIME, SHUT DOWN OR SLOW DOWN COSTS, OR FOR ANY OTHER TYPES OF ECONOMIC LOSS, AND FOR CLAIMS OF BUYER'S CUSTOMERS OR ANY THIRD PARTY FOR ANY SUCH DAMAGES. MANUFACTURER SHALL NOT BE LIABLE FOR AND DISCLAIMS ALL CONSEQUENTIAL, INCIDENTAL AND CONTINGENT DAMAGES WHATSOEVER.

BUYER AGREES THAT WITH REGARD TO ANY POTENTIAL CLAIM RELATING TO THE PRODUCT, IT SHALL WAIVE AND NOT SEEK ANY REMEDY OTHER THAN A CLAIM FOR BREACH OF MANUFACTURER'S LIMITED WARRANTY TO BE SOUGHT SOLELY AND EXCLUSIVELY FROM KANCA FORGING USA, INC. IN PARTICULAR, BUYER AGREES THAT IT SHALL NOT SEEK ANY REMEDY FROM KANCA EL ALETLERİ DÖVME ÇELİK VE MAKİNA SAN. A.Ş. OR ANY OWNERS, SHAREHOLDERS, DIRECTORS, OFFICERS, EMPLOYEES, AGENTS, ASSOCIATES, SUBSIDIARIES, OR AFFILIATES, AND BUYER HEREBY WAIVES ANY AND ALL OTHER POTENTIAL CLAIMS AGAINST SAID PARTIES.

PRIOR TO FILING ITS CLAIM FOR BREACH OF MANUFACTURER'S LIMITED WARRANTY, BUYER MUST FIRST AFFORD MANUFACTURER A REASONABLE OPPORTUNITY TO CURE THE BREACH THROUGH THE FOLLOWING PROCEDURES: IF BUYER REASONABLY BELIEVES THAT MANUFACTURER HAS COMMITTED A BREACH, BUYER MUST PROVIDE A SIGNED, WRITTEN NOTICE VIA U.S. CERTIFIED MAIL TO KANCA C/O ATOM LAW GROUP, LLC, 770 N. LASALLE ST., SUITE 700, CHICAGO, ILLINOIS 60654. MANUFACTURER SHALL THEN HAVE SIXTY (60) DAYS FROM THE DATE OF RECEIPT OF SUCH NOTICE OF BREACH TO CURE THE BREACH BY PROVIDING BUYER'S REQUESTED REPAIR AND/OR REPLACEMENT. IN THE EVENT THAT BUYER FAILS TO PROVIDE SUCH NOTICE, ITS CLAIM SHALL BE DISMISSED FOR FAILURE TO STATE A CLAIM.

#### VIII. MISCELLANEOUS

(A) Any description of the Product, whether in writing or made orally by Manufacturer or Manufacturer's agents, sales representatives, specifications, samples, models, bulletins, drawings, diagrams or similar materials used in connection with BUYER's order, are for the sole purpose of identifying the Product and shall not be construed as an express warranty. Any suggestions by Manufacturer or Manufacturer's agents regarding use, application, or suitability of the Product shall not be construed as an express warranty unless confirmed in writing by Manufacturer to be such.

(B) All correspondence directed to Manufacturer shall be sent via U.S. Certified Mail to:

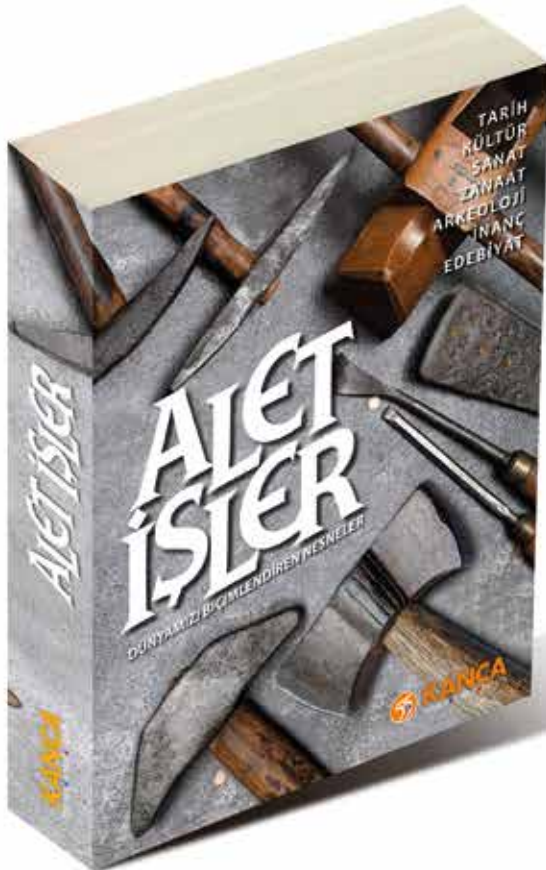
**Kanca Forging USA, Inc.**

901 Mittel Dr, Wood Dale IL 60191 Tel: 847 737-4176 • Fax: 847 430-4803 • Email: info@kancaforging.com


All products exhibited in KANCA catalog are subject to the Warranty Conditions given as Exhibit 1 and Kanca Forging USA Inc., Sales Terms and Conditions.

# First HAND TOOLS MUSEUM of TURKIYE

KANCA Hand Tools Museum

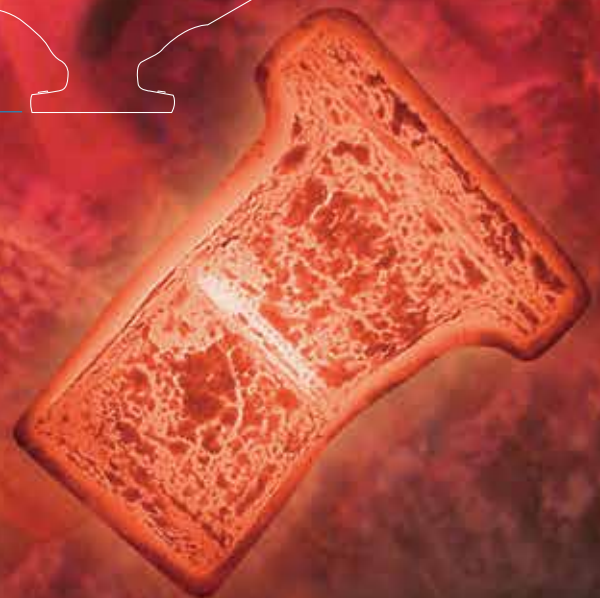
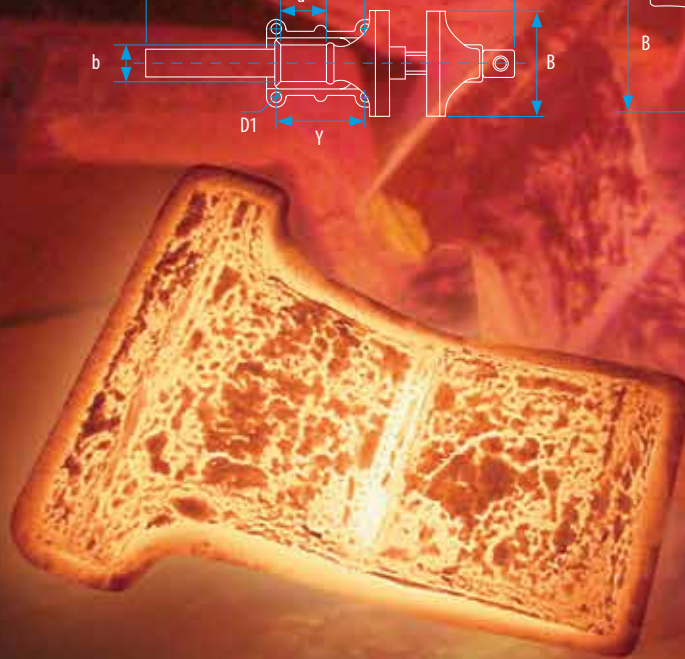
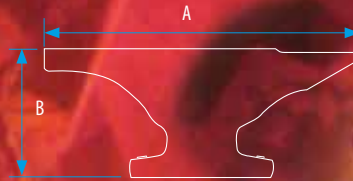
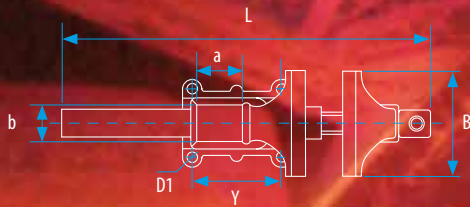
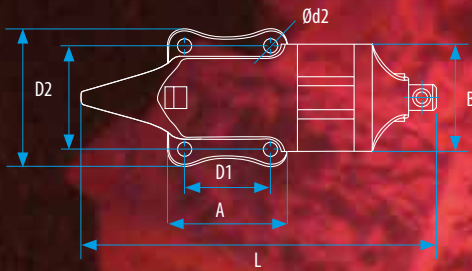
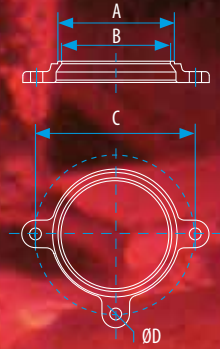
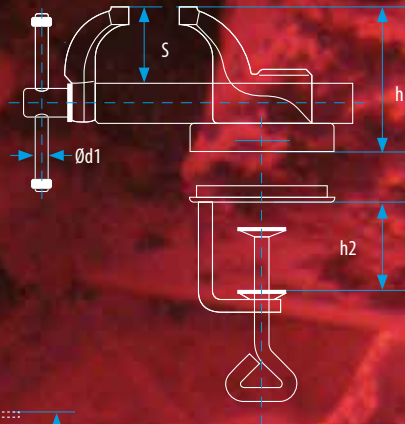
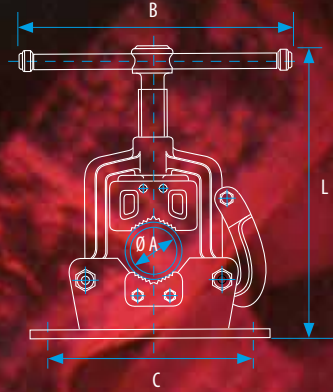
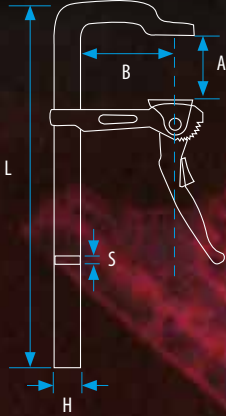
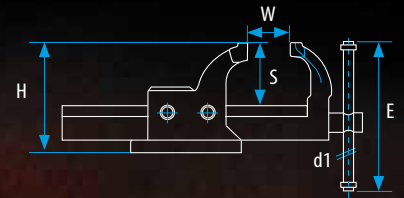
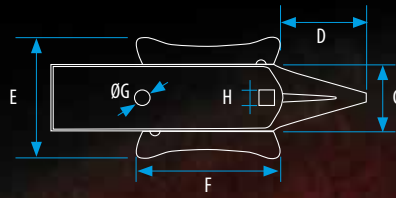
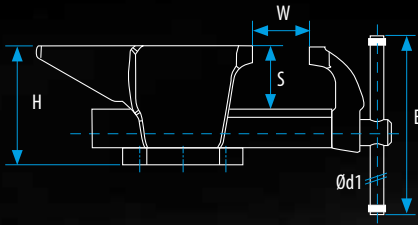


Over the years we have built up a valuable collection of old hand tools to preserve ancient knowledge and protect our historical heritage. We describe a selection of tools from our museum in our book "ALET İŞLER". The book in Turkish tells the story of traditional hand tools in Anatolia on 565 pages. Many drawings and illustrations describe the technical perfection and artistry of our ancestors.

 /aletisler







**KANCA**  
DESIGN • FORGE • SAFETY

**KANCA FORGING USA INC.**  
901 MITTEL DR. WOOD DALE, IL 60191 USA  
TEL: 847 737 4176 [www.kancaforging.com](http://www.kancaforging.com)

